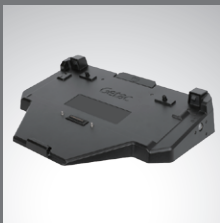


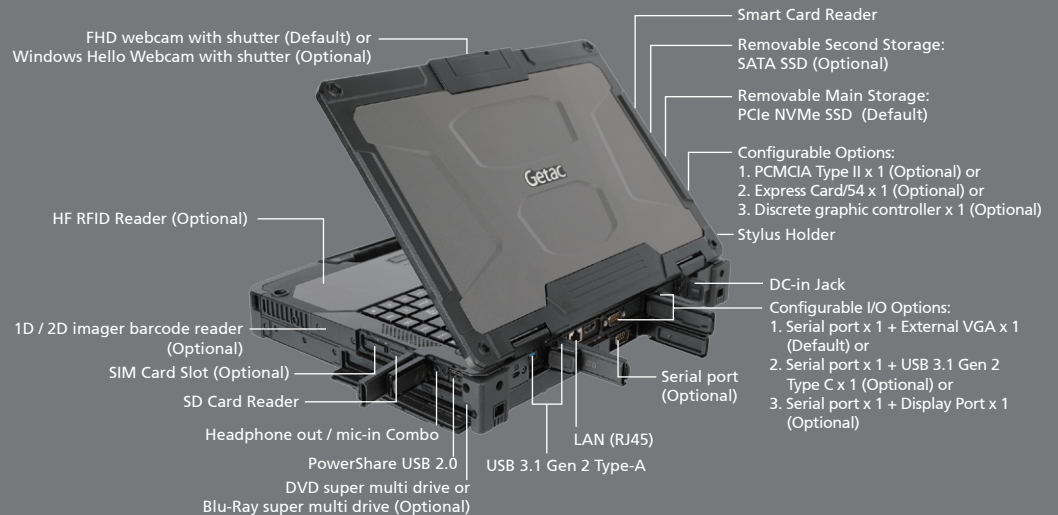


B360 Pro FULLY RUGGED NOTEBOOK

- MIL-STD 810H, 6 feet operating drop rating, IP66 certified, and optional salt fog resistant
- 10th Generation Intel® Core™ Processor
- 13.3" FHD LumiBond® 2.0 Display with Getac Sunlight Readable Technology (1,400 nits) and Capacitive Touchscreen
- Optional NVIDIA® GeForce® GTX1050 4GB Discrete Graphic Controller
- Enhanced enterprise security with optional dual user replaceable storage, Windows Hello face-authentication camera, integrated 1D / 2D Imager Barcode Reader and multi-factor authentication options
- LifeSupport™ Battery Swappable Technology



Office Dock



Specifications

Generation

G1

Operating System

Windows 10 Pro

Mobile Computing Platform

Intel® Core™ i5 Technology
Intel® Core™ i5-10210U Processor 1.6GHz
Max. 4.2GHz with Intel® Turbo Boost Technology
- 6MB Intel® Smart Cache

Platform Options:

Intel® Core™ i5 vPro™ Technology
Intel® Core™ i5-10310U, vPro processor 1.7GHz
Max. 4.4GHz with Intel® Turbo Boost Technology
- 6MB Intel® Smart Cache

Intel® Core™ i7 Technology
Intel® Core™ i7-10510U Processor 1.8GHz
Max. 4.9GHz with Intel® Turbo Boost Technology
- 8MB Intel® Smart Cache

Intel® Core™ i7 vPro™ Technology
Intel® Core™ i7-10610U Processor 1.8GHz
Max. 4.9GHz with Intel® Turbo Boost Technology
- 8MB Intel® Smart Cache

Intel® Core™ i7 Technology
Intel® Core™ i7-10710U Processor 1.1GHz
Max. 4.7GHz with Intel® Turbo Boost Technology
- 12MB Intel® Smart Cache

VGA Controller

Intel® UHD Graphics
Optional: NVIDIA® GeForce® GTX1050 4GB discrete graphic controller^{viii}

Display

13.3" IPS TFT LCD FHD (1920 x 1080)
Protection film
1400 nits LumiBond® display with Getac sunlight readable technology
Capacitive multi-touch screen

Storage & Memory

8GB DDR4
Optional: 16GB / 32GB / 64GB DDR4
Main Storage(quick-release): 256GB PCIe NVMe SSD
Optional: 512GB / 1TB / 2TB PCIe NVMe SSD
Optional 2nd Storage^e: 256GB / 512GB / 1TB / 2TB SATA SSD

Keyboard

LED backlit membrane keyboard
Optional: LED backlit rubber keyboard

Pointing Device

Touchscreen
- Capacitive multi-touch screen
Touchpad
- Glide touchpad with multi-touch

Expansion Slot

SD Card Reader x 1
Smart Card Reader x 1
Optional: PCMCIA Type II or Express Card/54 or Discrete graphic controller^{viii}
Optional: 1D/2D imager barcode reader

Multimedia Bay

Optional: DVD super multi drive / Blu-Ray super multi driveⁱⁱⁱ

I/O Interface

FHD webcam x 1
Headphone out/mic-in Combo x 1
DC in Jack x 1
PowerShare USB 2.0 x 1
USB 3.1 Gen 2 Type-A x 2
LAN (RJ45) x 1
HDMI x 1
Docking Connector x 1
SD Card Reader x 1
Optional: SIM card slot x 1
Optional: Windows Hello face-authentication camera (front-facing) x 1
Optional: RF antenna pass-through for GPS, WLAN and WWAN

Configurable I/O Options^{iv}:

Serial port (9-pin; D-sub) x 1 + External VGA (15-pin; D-sub) x 1, or
Serial port (9-pin; D-sub) x 1 + USB 3.1 Gen 2 Type C x 1, or
Serial port (9-pin; D-sub) x 1 + Display Port x 1, or
Serial port (9-pin; D-sub) x 2 + External VGA (15-pin; D-sub) x 1, or
Serial port (9-pin; D-sub) x 2 + USB 3.1 Gen 2 Type C x 1, or
Serial port (9-pin; D-sub) x 2 + Display Port x 1

Communication Interface

10/100/1000 base-T Ethernet
Intel® Wi-Fi 6 AX200, 802.11ax
Bluetooth (v5.1)^v
Optional: Dedicated GPS^{vi}
Optional: 4G LTE mobile broadband with integrated GPS^{vi}

Security Feature

TPM 2.0
Kensington Lock
Optional: HF RFID reader^{vii}
Smart Card reader

Power

AC adapter (90W, 100-240VAC, 50 / 60Hz)
AC adapter (120W, 100-240VAC, 50 / 60 Hz)^{viii}
High capacity battery (10.8V, typical 6900mAh; min. 6600mAh) x 2
LifeSupport™ battery swappable technology

Dimension (W x D x H) & Weight

342 x 281 x 53.5 mm (13.46" x 11.06" x 2.11"),
3.08 Kg (6.79 lbs)^x

Rugged Feature

MIL-STD-810H certified
IP66 certified
MIL-STD-461G certified^x
Vibration & 6 feet drop resistant^x
e-Mark certified for vehicle usage
Optional: ANSI / UL 121201, CSA C22.2 NO. 213
Optional: Salt fog certified

Environmental Specification

Temperature^{xi} :
- Operating: -29°C to 63°C / -20°F to 145°F
- Storage: -51°C to 71°C / -60°F to 160°F
Humidity:
- 95% RH, non-condensing

Pre-installed Software

Getac Utility
Getac Geolocation
Getac Barcode Manager^{vii}
Optional: Absolute Persistence^o

Accessories

High Capacity Battery (10.8V, typical 6900mAh; min. 6600mAh)
AC Adapter (90W, 100-240VAC)
Capacitive Stylus

Optional:

Backpack
High Capacity Battery (10.8V, typical 6900mAh; min. 6600mAh)
Multi-bay Charger (Dual Bay)
Multi-Bay Charger (Eight-Bay)
AC Adapter (90W, 100-240VAC)
AC Adapter^{viii} (120W, 100-240VAC)
MIL-STD-461 Certified AC Adapter (90W, 115-230VAC)
Vehicle Adapter (120W, 11-32VDC)
Capacitive Stylus
Protection Film
Vehicle Dock
Office Dock
Spare SSD Kit

Bumper-to-Bumper Warranty

Accidents can take your equipment out of service when you least expect it, especially in a rugged environment, which can cause costly equipment downtime.

That is why Getac has introduced accidental damage as standard under our Bumper-to-Bumper warranty, to help minimize your enterprise IT costs.

Bumper-to-Bumper is your hassle-free guarantee.

That means you can depend on us to have your unit back in service within days.

Standard

3 years Bumper-to-Bumper

- i Discrete graphic card, PCMCIA slot, and express card slot are mutually exclusive.
- ii Second storage is optional and will be fitted with a removable cover when not chosen at point of purchase.
- iii DVD super multi drive and Blu-Ray super multi drive are mutually exclusive.
- iv External VGA, USB 3.1 Gen 2 Type C and Display Port are mutually exclusive.
- v Bluetooth performance and connectable distance may be subject to interference with the environments and performance on client devices, users may be able to reduce effects of interference by minimizing the number of active Bluetooth wireless devices that is operating in the area.
- vi Dedicated GPS is mutually exclusive with 4G LTE mobile broadband.
- vii HF(13.56MHz) Combo HF RFID/NFC reader (iClass, HID Prox compliant, ISO 15693, 14443 A/B, Mifare, FeliCa™).
- viii 120W AC adapter is used for office dock and for device configured with Discrete Graphic Card.
- ix Weight and dimensions vary from configurations and optional accessories.
- x MIL-STD-461G 90W AC adapter sold separately.
- xi Tested by a national independent third party test lab following MIL-STD-810H.
- xii Available when barcode reader option is selected.

B360 Pro

Fully Rugged Notebook



Docking Solutions

	Vehicle Dock	Office Dock
Serial Port	1	1
External VGA	1	1
Microphone	--	1
Audio Output	--	1
DC in Jack	1	1
USB	6	5
LAN	2	2
HDMI	1	1
RF Antenna Connector	(GPS, WWAN, WLAN) (optional)	--
Kensington Lock	1	1

Getac

Getac (UK) Ltd.

Getac House, Stafford Park 12,
Telford, Shropshire TF3 3BJ, United Kingdom
Tel : +44 (0) 1952 207 222
Sales-Getac-UK@getac.com | www.getac.com/en/



Copyright © 2020 Getac Technology Corporation and/or any of its affiliates. All Rights Reserved.
Information provided herewith is for reference only,
available specification shall be subjected to quotation by request. V01M10Y200K