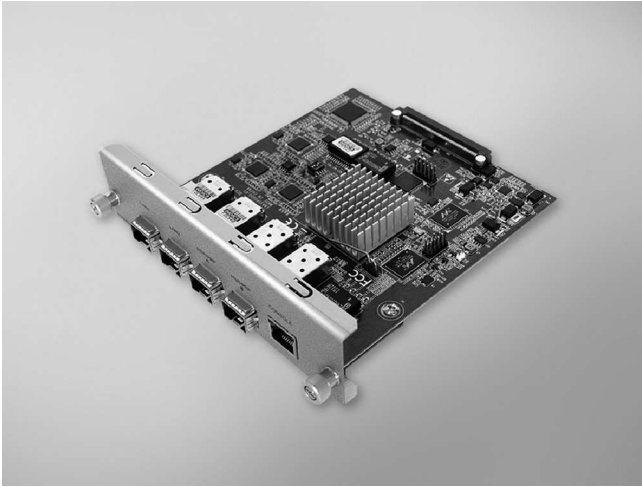


ECU-P1524PE

2-port SFP Gigabit Base Ethernet Card with HSR/PRP



Features

- CE/FCC Certification
- Support HSR Protocol (IEC 62439-3 Clause 5)
- Support PRP Protocol (IEC 62439-3 Clause 4)
- PCI Express Extension
- 2 x SFP Interface (For Ethernet Comm.)
- 2 x SFP Interface (For HSR/PRP)
- 1 x RJ45 (Interlink)
- Support IEEE 1588
- Operation Temp: -25~ 70°C

Introduction

The ECU-P1524PE is a PCIe extension card with HSR/PRP function to reduce the data transfer packet loss probability and ensure the system seamless switching. ECU-P1524PE combined with Power & Energy Automation Computer UNO-4673A/4683, ECU-4784 to give Ethernet redundant solution for smart substation Application.

Specifications

General

- **Connector** 120-pin connector for UNO- 4673A/4683/ECU-4784
- **BUS Interface** PCI Express(Not-Universal Interface)
- **Dimensions** 5.3" x 6.0" (136 x 150 mm)
- **Power Consumption** 5V \pm 5% @ 1000mA typical
3.3V \pm 5% @ 600mA typical
- **Certification** CE, FCC, IEC-61850-3 Compliant

Communication Interface

- **Ethernet** 2x SFP (mini-GBIC) Ethernet ports with HSR/PRP (1000Mbps Base-X, ECU-P1524PE-GAE)
(100Mbps Base-FX, ECU-P1524PE-AE)
2x SFP (mini-GBIC) Ethernet ports
- **LED Status** 2 x Act/Link (On ECU-4784 Front Panel)

HSR/PRP

- **Mode Selection** Hardware
- **LED Status** 2 x Act/Link, 1 x HSR, 1 x PRP, 2 x 100M/1000M (On ECU-4784 Front Panel)
- **Interface** 2x SFP (mini-GBIC) ports
1x RJ45 (Interlink)

Environment

- **Operating Temperature** -25~ 70°C (-13 ~ 158°F)
IEC 60068-2-2 with 100% CPU/ I/O loading, 24 hrs
- **Operating Humidity** 5 ~ 95% RH (non-condensing)
- **Storage Humidity** 5 ~ 95% RH (non-condensing)

Ordering Information

- **ECU-P1524PE-GAE** 2-port SFP Gigabit Base-X Ethernet Card with HSR/PRP
- **ECU-P1524PE-AE** 2-port 100Mbps Base-FX Ethernet Card with HSR/PRP