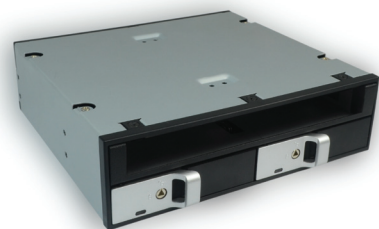


正反面单色印刷

76mm

MRA361

- ▶2X2.5" SATA HDD-ROM
- ▶12.7mm slim optical drive



USER'S MANUAL



Quick Installation Guide

Specifications

- ◎ Product name: MRA361
- ◎ OS: Windows Vista/XP/2000; Win 7 Mac 10.2 higher
- ◎ Interface: Supports SATA III (6.0Gb/s)
- ◎ Fits all 2.5" SATA hard disk
- ◎ Supports hot swap
- ◎ Weight : 565g
- ◎ Dimensions : 142(L) X 148 (W) X 42 (H) mm
- ◎ Operation Temperature : 0° ~ 55°C

Package Content

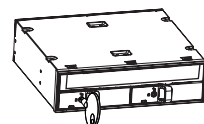
Accessories	Quantity
MRA361	1 pcs
SATA 7P Data Cable	2 pcs
SATA 15P Power Cable	2 pcs
Chassis fixed screws	4 pcs
DVD-ROM fixed screws	3 pcs
Manual	1 pcs
key	1 pcs

Switching key Triangular lock unlock with the key (clockwise rotated 90 degrees),

LOCK

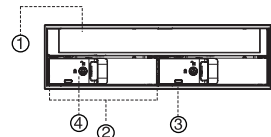


🔒: Lock
🔓: Unlock



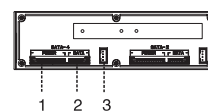
Front panel

- 1.DVD-ROM
- 2.Easy latch door
- 3.HDD LED indicator
- 4.Lock

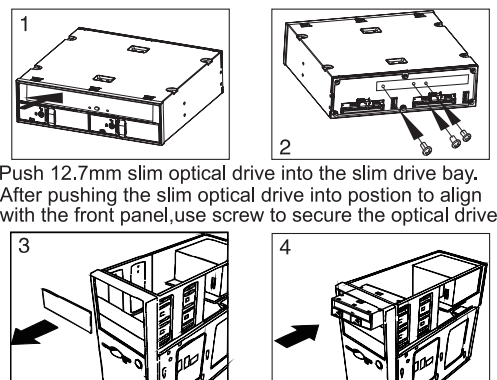


Rear panel

1. SATA power connector (15P)
2. SATA data connector(7P)
3. LED access port(4P)



Installation

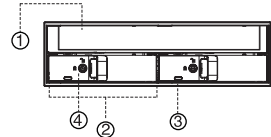


- 1.Push 12.7mm slim optical drive into the slim drive bay.
- 2.After pushing the slim optical drive into position to align with the front panel,use screw to secure the optical drive.

- 3.Remove the slot cover of an empty floppy bay.
- 4.Carefully insert the MRA361 into the bay and push it inward until the MRA361's screw hole is aligned with the hole of the bay.

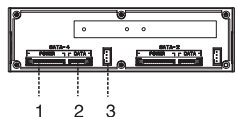
前面板

1. DVD-ROM
2. 硬碟抽取拉門
3. 硬碟讀寫指示燈
4. 安全鎖

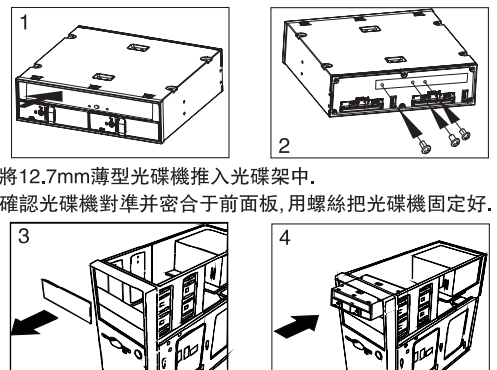


後面板

1. SATA電源連接器(15P)
2. SATA數據連接器(7P)
3. LED訊號連接器(4P)



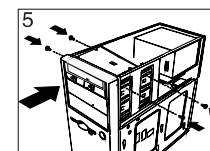
安裝



- 1.將12.7mm薄型光碟機推入光碟架中。
- 2.確認光碟機對準並密合于前面板,用螺絲把光碟機固定好。

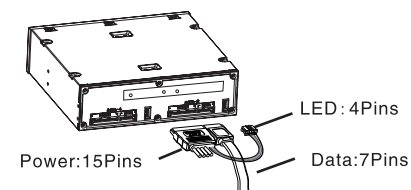
- 3.卸下電腦機箱前方空槽面板。
- 4.小心插入MRA361并推至底使之與機箱前面板平齊, MRA361孔位與機箱孔位對齊。

- 5.Secure the MRA361 is packed with screws,use 2 screws on each side to securely hold the device.



Connect the HDD-ROM cable

1. Insert the SATA15P conn. into the MRA361's 15P conn., connect the power 15P connector to the Pc's 15P power plug, and the small 4P LED wire connector to the 4P LED port at the back of MRA361.
- 2.Insert one end of the SATA7P cable to MRA361, another end(7P) to either the motherboard.



1. Be sure to connect the 4P LED wire, or the LED indicator will not be lighted up.
2. Before connecting the patent 7+15P SATA cable with the PC or with MRA361 HDD-ROM, please check there is no object on or beside the terminals that may effect the mechanical assembly or become a possible source of an electrical short.

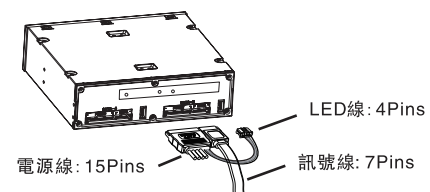
Install HDD

1. Triangular lock unlock with the key (clockwise rotated 90 degrees), open the panel;

- 5.每邊使用2個螺絲, 4孔固定。

連接

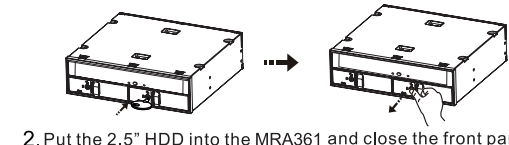
1. 請將SATA15P端連接至MRA361之15P端口,15P電源線與電腦主機電源相接,小4P LED線連接至MRA361後端之4P LED端;
- 2.請將SATA7P訊號線一端連接MRA361,另一端插入主機板訊號埠.如圖.



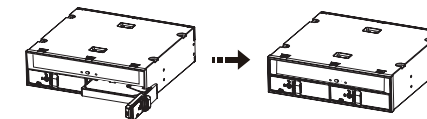
1. 4P LED必須插入MRA361 後端連接埠,否則LED無法亮。
- 2.線材與電腦主機或與MRA361 HDD-ROM相接前,務必確認兩端均無雜物附著在端子上面,以免造成電性短路。

安裝硬碟基本步驟

1. 用鑰匙解開三角鎖(順時針旋轉90度),拉開硬碟抽取拉門, 打開前門



2. Put the 2.5" HDD into the MRA361 and close the front panel.



1. After inserting HDD and closing the front door, carefully push the tray until it is seated into position.Excessive force may damage its mechanical parts.
- 2.If the HDD is inserted backward into the tray, forcing the device may damage the MRA361 HDD-ROM.

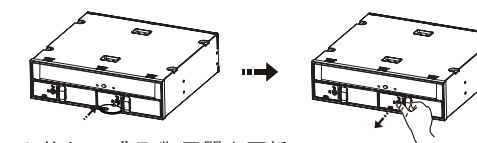
Eject HDD from the HDD-ROM

1. Use the key " clockwise 90° " to open the door .
2. Take the HDD out from HDD-ROM , and firmly close the front door .use the key " Anti-Clockwise 90° " to lock the door .

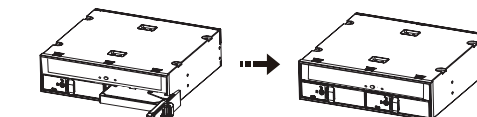
1. Do not eject the HDD while it is busy
2. Carefully take the HDD out from MRA361 HDD-ROM. The HDD can reach temperatures over 50°C. It will not burn the fingers but should be handled with care.

Statement

The contents of user's manual are protected under copyright law.Any organization or individual can not make copy and save it in the information bank or the retrieval system by any method or form without the authorization of Wingsonic. Wingsonic is not responsible for any loss in the process of using the HDD-ROM.



2. 放入2.5"硬碟,再關上面板。



- 1.插入硬碟並關上前面板時,請小心輕輕推動前面板至鎖住狀態,以免機構零件受損。
- 2.如果硬碟插入方向錯誤,請不要關閉前門,如強行關閉,MRA361HDD-ROM會被損害。

卸下硬碟步驟

1. 使用鑰匙解開三角鎖(順時針旋轉90度),拉開硬碟抽取拉門, 打開前門。
2. 將硬碟從HDD-ROM中取出, 關好HDD-ROM前門, 使用鑰匙對準三角鎖逆時針旋轉90度鎖定。

1. 當工作狀態下禁止卸下硬碟。
2. 硬碟表面溫度有可能高達50°C, 雖不會造成燙傷, 但仍要小心, 請接觸硬碟邊緣, 不要觸摸上面的電路板。

聲明

用戶手冊所包含的內容均受到版權法的保護未經台灣賀豪科技股份有限公司的批准,任何組織或個人不得以何手段或形式對其進行複製,存於資料庫或檢索系統。對於在使用硬碟抽取盒過程中所造成的任何損失,賀豪科技股份有限公司概不負責。

MRA361

- ▶2X2.5" SATA碟碟抽取盒
- ▶12.7mm薄型光驅



使用者說明書



快速安裝指南

產品規格

- ◎ 產品名稱: MRA361
- ◎ 作業系統: Windows Vista/XP/2000; Win 7/ Mac 10.2 higher
- ◎ 傳輸界面: 支援SATA III (6.0Gb/s)
- ◎ 適用於2.5" SATA 硬碟
- ◎ 支援熱插拔
- ◎ 重量: 565g
- ◎ 尺寸大小: 142(L) X 148 (W) X 42 (H) mm
- ◎ 工作溫度: 0° ~ 55°C

包裝內容

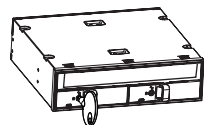
附件	數量
MRA361	1
SATA7P 訊號線	2
SATA15P電源綫	2
機箱固定螺絲	4
光驅固定螺絲	3
說明書	1
鑰匙	1

開關鍵 用鑰匙解開三角鎖(順時針旋轉90度)即可。

鎖



🔒: 鎖固
🔓: 解鎖



110mm

110mm