

TOOL FREE SCREW-LESS [HDD-ROM] 1 x 2.5" & 2 x 3.5" Raid Mobile Rack

MRA503R TOOL FREE SCREW-LESS 1 x 2.5" & 2 x 3.5" Raid Mobile Rack MANUAL



MRA503R MANUAL



目錄

Table of Contents

English

MRA503R --- 01
Product diagram --- 02
Hardware Installation --- 03
HDD Installation --- 04
How to use --- 05-06
Note --- 07

繁体中文

MRA503R --- 08
產品說明 --- 09
安裝步驟 --- 10
放置硬碟 --- 11
退出硬碟 --- 12
功能使用說明 --- 13-14
注意事項 --- 15

Introduction

MRA503R takes two 5.25" space and supports 2bay Raid for 3.5" HDD plus 2.5" Rack for spare SSD. All metal parts and intelligent temperature control design which provide more rigid quality and greater heat dissipation.

Specifications & Package content

Specifications
Interface : Support SATA I/II/III(6.0Gb/s)
Supported HDD type : 1 x 2.5" SATA/SAS HDD + 2 x 3.5" SATA HDD
Assembly Space : 2 x 5.25" CD-ROM space
Material : Aluminum, Alloy Zinc, SGCC, SUS430, PC
Product Dimensions : (L)190x(W)148x(H)85.7mm
Product Weight : 1.415g
Operating Temperature : 0°C ~ 55°C
Operating Systems : Windows/Mac
Raid : Yes, supports JBOD, Nor, Raid 1, Raid 0

Package content
SATA data cable (x2)
Frame screws (x8)
Key (x4) : No.101 x 2 for 3.5" bay, No.102 x 2 for 2.5" bay
User manual (x1)

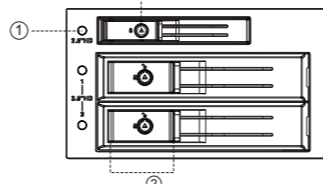
[01]

Product diagram

Lock

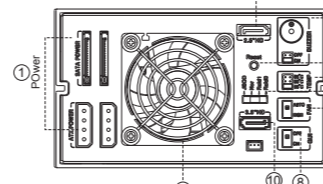
Use the key to unlock it by rotating the key 90 degrees clockwise.

Front view



- 1. Power switch / LED indicator
2. Door handle
3. Lock

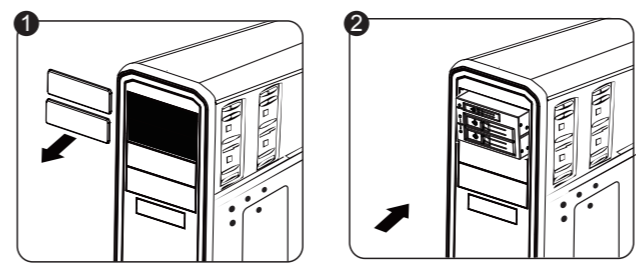
Back view



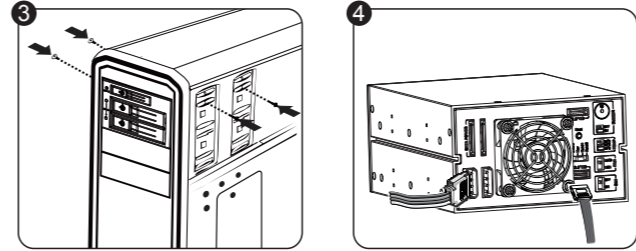
- 1. Power port
2. SATA port for 2.5" bay
3. Buzzer switch
4. Raid reset
5. Temperature alarm setting
6. Raid setting switch
7. Fan speed switch
8. GUI RAID setting
9. Drive cooling fan
10. SATA port for 3.5" bay

[02]

Hardware Installation



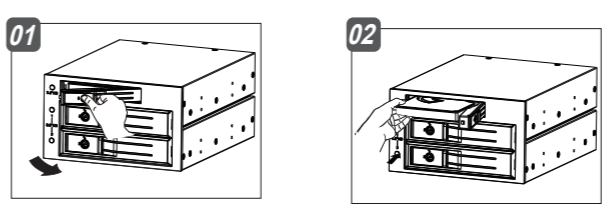
- 1. Remove the panel from the available 2 x 5.25" bay.
2. Insert the MRA503R into the bay and carefully align it with the screw hole of the chassis.



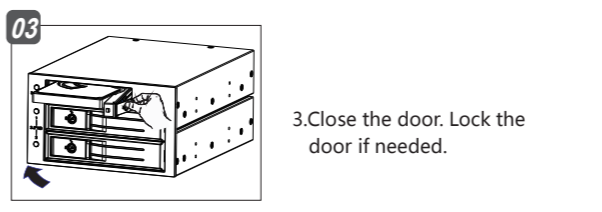
- 3. Fix four screws on each side, eight screws in total.
4. Connect the MRA503R to the motherboard with at least two SATA power cables (15P or 4P Molex) and two SATA data cables.

[03]

HDD Installation



- 1. If the door is locked, use the key to unlock it. Then pull the door handle and open it.
2. Insert the HDD.



- 3. Close the door. Lock the door if needed.

Note

- 1. Do not hot-swap the operating system hard drive if it is on the inside of the MRA503R. Please turn off the computer first.
2. Do not remove the hard drive during working condition.
3. Hard drive is a precision device, please read the HDD manual in advance before use.
4. Do not force to close the door if inserting the HDD in wrong direction, or the HDD enclosure will be damaged.
5. Be aware of the heat since the drive may reach temperature up to 50°C.

[04]

How to use

1. Independent power switch

- 1.1 Press the power switch button for 3 seconds to power on or off the bays, it only works under the HDDs are in the bays.

- 1.2 The power will be off automatically when the HDD is ejected. It needs to be power on again when the HDD is inserted back.

- 1.3 The second and third button can power on and off two bays x 3.5" synchronously.

2. Power on / off for all bays

- 2.1 The first bay x 2.5"
Solid blue for power and blinking blue for HDD access

- 2.2 The last two bays x 3.5"
Solid blue for power and blinking blue for HDD access
Solid red for the drive is experiencing an error
Blinking red for RAID is being rebuilt

3. Fan malfunction alarm

- When the fan is malfunction, the buzzer is on. Press any button to stop the buzzer.

4. Temperature alarm

- When the temperature of the device is above the setting, the buzzer is on. Press any button to stop the buzzer.

5. Memorize function

- Once the device is re-started, the HDD status will return automatically.

[05]

6. Fan speed switch
AUTO = When the internal temperature reaches 30 °C, the fan starts running. Fan speed will be adjusted automatically by the temperature change, fan spins at the highest speed when the temperature reaches 40 °C. HI = Fan spins at the highest speed when the temperature reaches 30 °C.

7. Buzzer switch
OFF = Power off the buzzer sound
ON = Power on the buzzer sound

8. Temperature alarm setting
55, 60, and 65°C, three temperature level alarm setting

9. GUI RAID setting
ON = Software setting (Not available)
OFF = Hardware setting (Default)

10. Raid setting switch
When GUI RAID is set to OFF, switch to your ideal Raid mode, press the Reset button for 6 seconds, Raid setting is complete. No need to power off and on two bays x 3.5" .

[06]

Note

- 1. For NOR mode, the motherboard or SATA host controller must support the port multiplier to recognize two 3.5" hard drives. If the motherboard or SATA host controller does not support port multiplier, only one 3.5" hard drive can be recognized.

- 2. We provide repair service for defective product, and do not take responsibility for data loss that caused by manual operation mistake.

[07]

產品規格&包裝內容

產品特色

- 2個5.25吋空間可容納1顆2.5吋+2顆3.5吋大硬碟;
• 免工具更換硬碟設計,內置獨家NSS專利連接器;
• 1顆6公分風扇強制對流散熱
• 全鋁機身外殼,高強,堅固,美觀;
• 硬碟倉門開啟位置帶鎖設計,防止硬碟被誤開啟;
• 前置獨立電源控制按鈕及燈號指示;
• 智能化溫控設計,透過軟體控制風扇轉速來驅動散熱;
• 蜂鳴器警報裝置,監視硬碟工作溫度狀態,保障資料安全;
• 斷電記憶功能,產品重新上電後,自動重啟恢復原狀態

產品規格

傳輸介面: SATA I/II/III(6.0Gb/s)
支援系統: Windows/Mac
RAID功能: JBOD,RAID1,RAID0,NOR
重量: 1.415kg
外觀尺寸: (L)190x(W)148x(H)85mm
運作溫度: 0°C ~ 55°C

配件包

MRA503R 硬碟抽取盒(x1)
螺絲(x8)
使用說明書(x1)
鑰匙 (x4) : No.101 x 2 for 3.5" bay, No.102 x 2 for 2.5" bay
SATA線材(x2)

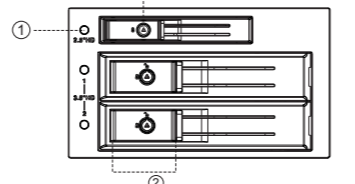
[08]

產品說明

倉門鎖

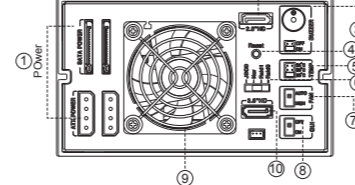
用鎖匙可操作鎖在解鎖與鎖固兩個位置轉動。

前面板



- 1. 電源開關/按鍵/指示燈
2. 門門把手
3. 硬碟倉門鎖

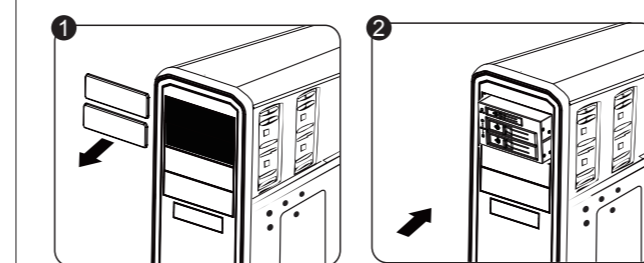
後面板



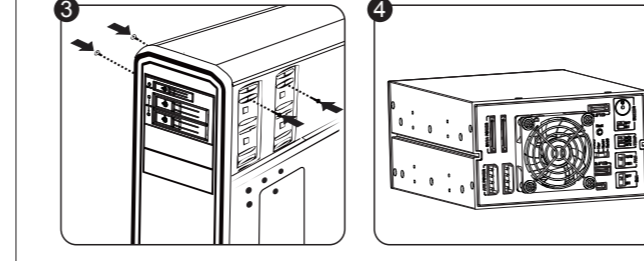
- 1. 電源線接頭
2. 2.5吋硬盤SATA數據接口
3. 蜂鳴器/蜂鳴器開關
4. 確認鍵
5. 報警溫度設定
6. RAID模式
7. 風扇模式設定
8. GUI模式設定
9. 散熱風扇
10. 3.5吋硬盤SATA數據接口

[09]

安裝



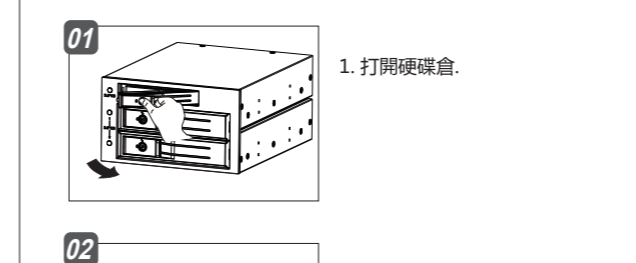
- 1. 取出電腦機箱中2個5.25槽板。
2. 小心插入MRA503R並推入至前面板到MRA503R孔位對齊至機箱孔位;



- 3. 每邊使用1顆螺絲,固定MRA503R8個螺絲孔;
4. 將大ATX-4P電源線或SATA 15P電源線插入如右圖所示位置(至少需要插兩條),連接SATA數據線從本產品到主板上的SATA介面。

[10]

放置硬碟到MRA503R:



- 1. 打開硬碟倉。
(當讀寫狀態下禁止卸下硬碟,系統請勿熱插拔)



- 2. 放入硬碟到MRA503R,注意碟標面向上,並確認硬碟連接器方向指向MRA503R;
3. 關門並推動硬碟到MRA503R,關好前門;

注意:

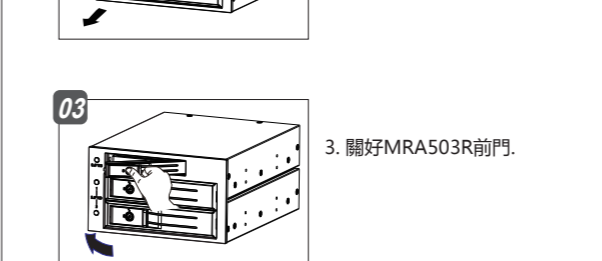
- 1. 切勿對操作系統所在硬碟進行熱插拔;
2. 硬碟是精密設備,使用時須特別注意,請預先閱讀硬碟使用說明書;

[11]

退出硬碟步驟:



- 1. 打開硬碟倉。
(當讀寫狀態下禁止卸下硬碟,系統請勿熱插拔)



- 2. 將硬碟從MRA503R中取出。
(硬碟表面溫度可能高達50°C,雖不會造成燙傷,但仍要小心,請接觸硬碟的邊緣,不要觸摸下面的電路板)

注意:

- 1. 請勿在MRA503R內部放置其他物品;
2. 不使用時應將門關好,避免意外的撞擊及灰塵進入內部;

[12]

功能使用說明

1. 獨立電源開關

- 1.1 長按按鍵3秒,開啟或關閉對應硬碟電源(以上動作必須槽內有硬碟,否則電源無法被開啟)
1.2 當抽出硬碟時會自動斷電,重新插入時,需再次通過按鍵開啟電源
1.3 第一鍵對應第一槽2.5" 槽電源
1.4 第二三鍵同步開啟二三3.5" 槽電源

2. LED指示燈

Table with 2 columns: 電源開起 (藍燈長亮, 讀寫閃爍), 硬碟讀寫 (藍燈閃爍)

Table with 2 columns: 電腦辨識硬碟 (藍燈長亮), 硬碟讀寫 (藍燈閃爍), 硬碟故障 (紅燈長亮), 硬碟重建 (紅燈閃爍)

3. 風扇故障報警

- 當風扇發生異常時,蜂鳴器警報響起,蜂鳴器報警,任意鍵按一下暫時取消蜂鳴器警報

4. 溫度超限報警

- 溫度超上限時,蜂鳴器報警,任意鍵按一下取消蜂鳴器報警,任意鍵按一下暫時取消蜂鳴器警報,直到故障排除

5. 斷電記憶功能

- 當產品電源切斷後重新通電,產品自動重啟保持硬碟斷電前狀態

[13]

6. 風扇調速開關

- Auto=產品內部溫度達到30度時,風扇開始運轉,風扇轉速隨溫度變化自動調節節速度,溫度上升到40度時風扇全速運轉
Hi=溫度達到30度時,風扇開始全速運轉

7. 蜂鳴器報警開關

- OFF=蜂鳴器報警聲音關閉;
ON=蜂鳴器報警聲音開啟

8. 報警溫度設定

- 55.60.65度三段設定報警溫度上限

9. GUI RAID 設定

- ON=軟體設定
OFF=硬體設定(預設)

10. RAID 模式設定

- 在GUI RAID設定為OFF狀態下,按動切換開關到所需要的Raid模式位置,然後按住確認6秒即完成切換。

[14]

注意事項

- 1. 如果硬碟插入方向錯誤,請不要強行開前門,如強行開門MRA503R會被損壞;
2. 在使用MRA503R熱插拔硬碟前先安裝SATA介面熱插拔相關驅動程式及硬碟管理軟體;
3. 如果操作系統所在硬碟是裝置MRA503R之內,只有在關閉電源的情況下才能抽換硬碟;
4. NOR(PM)模式下,主機板或控制卡必須支援port multiplier才能識別到二顆硬碟使用,如主機板或控制卡未支援port multiplier,則只能識別到一顆硬碟使用,可購買SATA擴展卡來實現。

聲明

用戶手冊所包含的內容均受到版權法的保護未經本公司的批准,任何組織或個人不得以何手段或形式對其進行複製,存於資料庫或檢索系統,對於在使用硬碟抽取盒過程中所造成的任何損失,本公司概不負責。

[15]