

90mm

90mm

120mm

TOOL FREE SCREW-LESS
[HDD-ROM] 3X3.5" Mobile Rack

MRA400AL
TOOL FREE SCREW-LESS
[3X3.5" Mobile Rack]
MANUAL



MRA400AL
MANUAL



Supports all 3.5" SATA hard drives
Supports SATA I/II/III(6.0Gb/s)
NSS connector gives over 50,000 cycle hot swaps

目錄
3 Bay Mobile Rack

English

MRA400AL ----- **01-03**
Installation ----- **04**
Injecting Hard Drive ----- **05**
Removing Hard Drive ----- **06**
Cautions ----- **07**

繁體中文

MRA400AL ----- **08-10**
安裝步驟 ----- **11**
放置硬碟 ----- **12**
退出硬碟 ----- **13**
注意事項 ----- **14**



MRA400AL
3 Bay Mobile Rack

Features:

- Fits three SATA hard drives in two empty drive bays
- Supports all 3.5" SATA hard drives
- Supports SATA I/II/III(6.0Gb/s)
- NSS connector gives over 50,000 cycle hot swaps
- LED indicator for power and HDD activity
- Air conventional door frame ensures ventilation
- A 2500 rpm fan with dimension of 80 * 80* 20mm,help to heat ventilation
- Easy cable connection

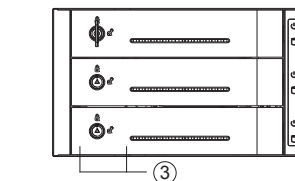
Specifications:

Interface:	SATA
Transfer speed:	SATA I/II/III(6.0Gb/s)
Product weight:	1078g
Support system:	Windows Vista/XP/2000/98SE/ME; Win7/Mac9.3 higher
Dimensions:	(L)220x(W)148x(H)86mm
Operation temperature:	0°C - 55°C

[01]

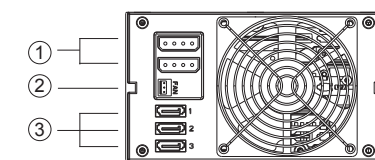
MRA400AL
3 Bay Mobile Rack

Front Panel:



1. Power LED
2. HDD Activity LED
3. Front door

Rear Panel:



1. Power connector
2. Fan connector
3. SATA data connector

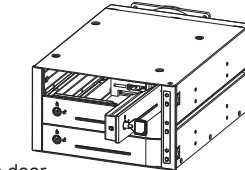
Accessories:

MRA400AL	1pcs
Screw	8pcs
Manual	1pcs
Key	2pcs

[02]

Spring Lock For Front Door:

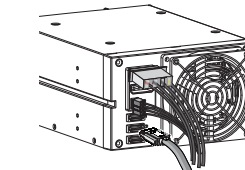
MRA400AL
3 Bay Mobile Rack



Turn the key anti-clockwise to open the door.

Connection:

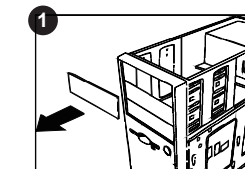
1. Connect two computer power cables (4P) to the power connector on the rear panel .
2. Connect the SATA data cable (7P) from the SATA data connector to the motherboard SATA port (7P).



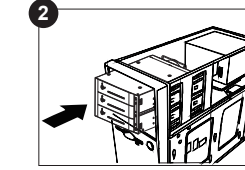
[03]

MRA400AL Manual

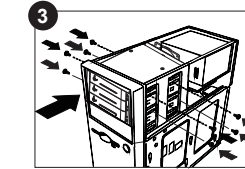
Installation:



1. Remove the covers from two available adjacent 5.25" drive bays.



2. Insert the rack into the empty drive bays until rack's screw holes are aligned with the case's.

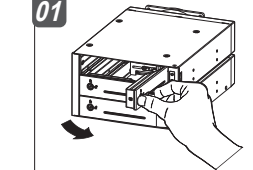


3. Secure the rack with screws.

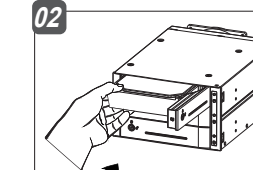
[04]

MRA400AL Manual

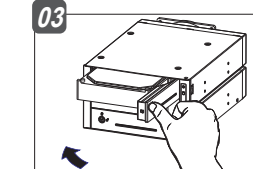
Inserting the Hard Drive



1. Pull the easy latch to release the front door.



2. Insert the hard drive in the rack, label (printed) side up.



3. Push the door until firmly locked.

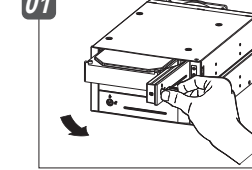
Caution:

1. Do not perform hot swaps with the hard drive has application software.
2. The hard drive is fragile hardware. Please handle with care and read the hard drive manual prior use.

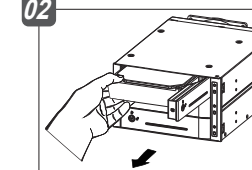
[05]

MRA400AL Manual

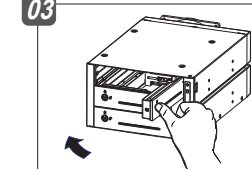
Removing the Hard Drive



1. Turn the key anti-clockwise to open the door.
Make sure to close all application and programs before removing the hard drive, as the data could loss or HDD may damage.



2. Carefully remove the hard drive from the rack.
The hard drive temperature may reach up to 50°C. Hold the hard drive by the edges to avoid heat.



3. Firmly close the front panel door.

Caution:

1. Don't place foreign objects inside the rack.
2. Always keep the front panel door closed to prevent damage and dust accumulation.

[06]

MRA400AL Manual

Attention:

1. Start the fan when the hard drive is working , the hard drive may be damaged if the fan is not started.
2. Front door will not be closed firmly if HDD is being inserted in wrong direction. HDD-ROM will get damaged if closing with force.
3. Please install the SATA port starting software before usage.
4. While HDD is busy , please do not eject the HDD.

[07]



MRA400AL
3 Bay Mobile Rack

產品特色:

- 兩個相連的5.25" 驅位, 容納三個SATA硬碟
- 適用於所有的3.5" SATA硬碟
- 支持SATA I/II/III(6.0Gb/s)
- NSS專利連接器, 支持五萬次熱插拔
- LED指示燈, 指示電源和硬碟讀寫動作
- 門框對流設計, 科學散熱
- 1個2500轉80*80*20mm 含油風扇, 幫助驅熱
- 簡易線材連接方式

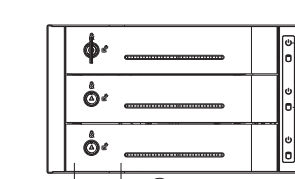
產品規格:

傳輸介面:	SATA
傳輸速度:	SATA I/II/III(6.0Gb/s)
重量:	1078g
支援系統:	Windows Vista/XP/2000/98SE/ME; Win7/Mac9.3 higher
外觀尺寸:	(L)220x(W)148x(H)86mm
運作溫度:	0°C - 55°C

[08]

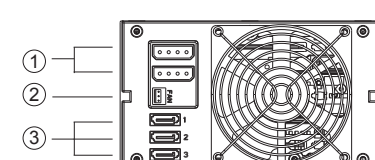
MRA400AL
3 Bay Mobile Rack

前面板:



1. 電源指示燈
2. 硬碟讀寫指示燈
3. 硬碟倉

後面板:



1. 電源線接口
2. 風扇接線口
3. SATA 接線口

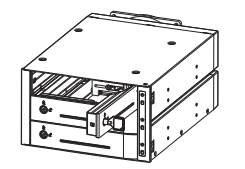
配件包:

MRA400AL 硬碟抽取盒	1pcs
螺絲	8pcs
使用說明書	1pcs
鑰匙	2pcs

[09]

MRA400AL
3 Bay Mobile Rack

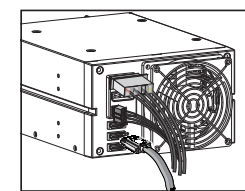
硬碟倉



用鑰匙解開三角鎖(順時針旋轉90度), 打開硬碟倉。

連接:

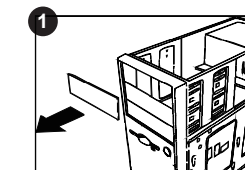
1. 將2條大4P電源頭接至本產品對應的介面處, 如右圖示:
2. 連接SATA線至主板SATA介面。



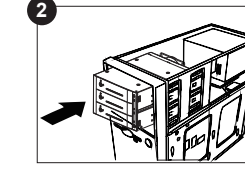
[10]

MRA400AL 說明書

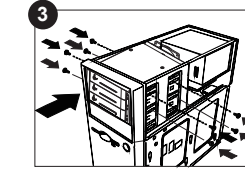
安裝步驟:



1. 取出電腦機箱中2個5.25槽板



2. 小心插入HDD-ROM並推入至前面板到HDD-ROM孔位對齊至機箱孔位:

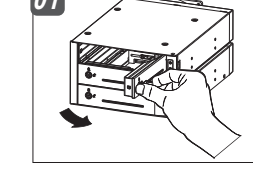


3. 每邊使用4顆螺絲, 固定HDD-ROM 8個螺絲孔:

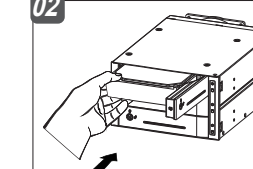
[11]

MRA400AL 說明書

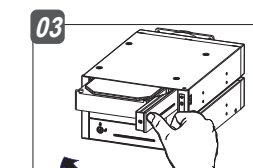
放置硬碟到HDD-ROM:



1. 用鑰匙解開三角鎖(順時針旋轉90度), 打開硬碟倉。



2. 放入硬碟到HDD-ROM, 注意硬碟標籤向上, 並確認硬碟連接器方向指向HDD-ROM:



3. 關門並推動硬碟到HDD-ROM, 鎖好前門:

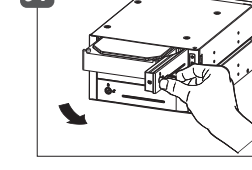
注意:

1. 切勿對操作系統所在硬碟進行熱插拔;
2. 硬碟是精密設備, 使用時須特別注意, 請預先閱讀硬碟使用說明書;

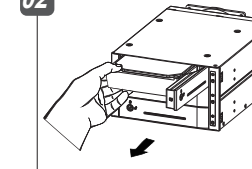
[12]

MRA400AL 說明書

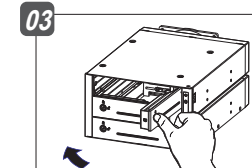
退出硬碟步驟:



1. 使用鑰匙解開三角鎖(順時針旋轉90度), 打開硬碟倉。
(當讀寫狀態下禁止卸下硬碟)



2. 將硬碟從HDD-ROM中取出
(硬碟表面溫度可能高達50°C, 雖不會造成燙傷, 但仍要小心, 請接觸硬碟的邊緣, 不要觸摸下面的電路板)



3. 關好HDD-ROM前門

注意:

1. 請勿在HDD-ROM內部放置其他物品;
2. 不使用時應將門關好, 避免意外的撞擊及灰塵進入內部;

[13]

MRA400AL 說明書

注意事項:

1. 風扇電源必須插入, 否則有可能高溫損毀硬碟。
2. 如果硬碟插入方向錯誤, 請不要硬關前門, 如強行關門HDD-ROM會被損壞;
3. 在使用HDD-ROM熱插拔硬碟前先安裝SATA介面熱插拔相關驅動程式及硬碟管理軟體;
4. 如果操作系統所在硬碟是裝置HDD-ROM之內, 只有在關閉電源的情況下能抽換該硬碟;

[14]