

P1127E-500 NEW

12.1" XGA TFT Expandable Industrial Touch Panel Computer with 7th/6th Gen Intel® Core™ i7/i5/i3, Celeron® & Pentium® Processor and 1 PCI/PCIe Slot

Features

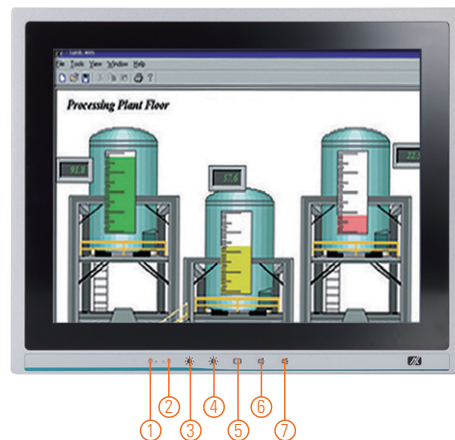
- 12.1" XGA TFT LCD display
- LGA1151 socket 7th/6th gen Intel® Core™ i7/i5/i3, Celeron® & Pentium® processors
- Intel® H110 chipset
- Less screw design for easy installation
- 4 USB 3.0, 2 USB 2.0 and 4 COM
- One PCIe x4 or one PCIe slot
- Built-in speakers and optional Wi-Fi 802.11 b/g/n module
- Robust IP65 compliant aluminum front bezel
- 5 OSD keys in front panel



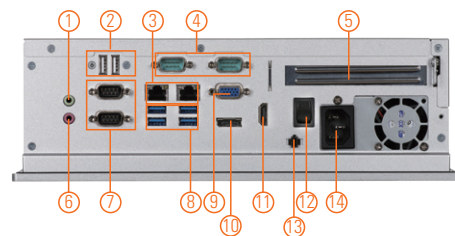
▲ Side view



▲ Back view



1. Display status LED
2. SATA status LED
3. Brightness -
4. Brightness +
5. Display monitor ON/OFF
6. Volume -
7. Volume +



- | | | |
|---|-------------------------------|---------------------------------|
| 1. 1 x Line-out | 6. 1 x Mic-in | 11. 1 x HDMI |
| 2. 2 x USB 2.0 | 7. 1 x RS-232/422/485 (COM 1) | 12. 1 x Switch for power on/off |
| 3. 2 x RJ-45 for Gigabit Ethernet | 1 x RS-232 (COM 2) | 13. 1 x Remote Switch Button |
| 4. 1 x RS-232 (COM 3) | 8. 4 x USB 3.0 | 14. 1 x AC Plug |
| 1 x RS-232 (COM 4) | 9. 1 x VGA | |
| 5. 1 x PCI or 1 x PCIe x4 Card expansion slot | 10. 1 x Display Port | |

Introduction

The P1127E-500 is a multimedia 12.1" touch panel PC for kiosk application. It has a fashionable mechanism design and industrial-grade material front bezel which can avoid damage from chemical corrosion. To meet the demands of multimedia application, the P1127E-500 is powered by a high performance LGA1151 socket 7th/6th generation Intel® Core™ processor with the Intel® H110 chipset. It features four COM ports, two Gigabit Ethernet and up to 32GB memory of dual-channel DDR4-2133 that delivers high computing capability for high performance-demanding applications. The industrial touch panel PC is most suitable for kiosk, factory and automation.

Expandable for 1 PCIe or 1 PCI

The P1127E-500 has 1 PCIe x4 or 1 PCI slot for expansion purpose. User can easily plug in standard half-size PCI or PCIe card based on any application needs.

Speaker and WLAN Antenna Supported

The P1127E-500 features built-in speakers for kiosk application to display multimedia content program. It also supports WLAN module antenna (optional) for wireless network connectivity.

Friendly Less Screw Design

The P1127E-500 is designed with easy of maintenance in mind. There are only three screws on the back chassis, so that technicians can quickly remove the system's back cover with minimum effort.

Specifications

Front Bezel	Aluminum w/ IP65/NEMA 4 rugged protection	
LCD Panel	Display Type	12.1" XGA TFT LCD
	Brightness	500 nits
	Resolution	1024 x 768 pixels
	Viewing Angle	160°/140°
Main System	CPU	LGA1151 socket 7th/6th gen Intel® Core™ i7/i5/i3, Celeron® & Pentium® processor
	Chipset	Intel® H110
	System Memory	2 x 288-pin DDR4-2133 Long-DIMM, up to 32GB
	BIOS	AMI UEFI BIOS
	Storage	1 x 2.5" SATA HDD
	Drive	N/A
	Watchdog Timer	255 levels, 1 ~ 255 sec.

* All specifications and photos are subject to change without notice.

Specifications

IO Connector	3 x RS-232 (COM 2 ~ 4) 1 x RS-232/422/485 (COM 1) 1 x HDMI 1 x VGA 1 x DisplayPort 4 x USB 3.0 2 x USB 2.0 2 x 10/100/1000 Mbps Ethernet (Intel® i219LM/i211AT) 1 x Audio (Mic-in/Line-out) 1 x Remote Power Switch
Expansion Interface	1 x PCIe x4 or 1 x PCI
Touchscreen	5-wire resistive type Light transmission 79% 1 million activations (typical) at a single point
Power Supply	100 ~ 240 VAC, 200 W
Power Consumption	TBC
Dimensions	TBC
Packing Dimension	TBC
Weight(net/gross)	TBC
Environment	Operating temperature: 0°C ~ +50°C (+32°F ~ +122°F) Relative humidity: 10% ~ 90% @ +40°C, non-considering Operating vibration: 1.0G, 5 ~ 500 Hz, random
Certificate	CE

Ordering Information

P1127E-500 w/ PCIe	12.1" XGA expandable industrial touch panel computer with LGA1151 socket 7th/6th gen Intel® Core™ i7/i5/i3, Pentium® & Celeron® processor, resistive touch screen and 1 PCIe x4 slot and 100 ~ 240 VAC
P1127E-500 w/ PCI	12.1" XGA expandable industrial touch panel computer with LGA1151 socket 7th/6th gen Intel® Core™ i7/i5/i3, Pentium® & Celeron® processor, resistive touch screen and 1 PCI slot and 100 ~ 240 VAC

* Specification and certifications are based on requirements and may vary.

Optional Accessories

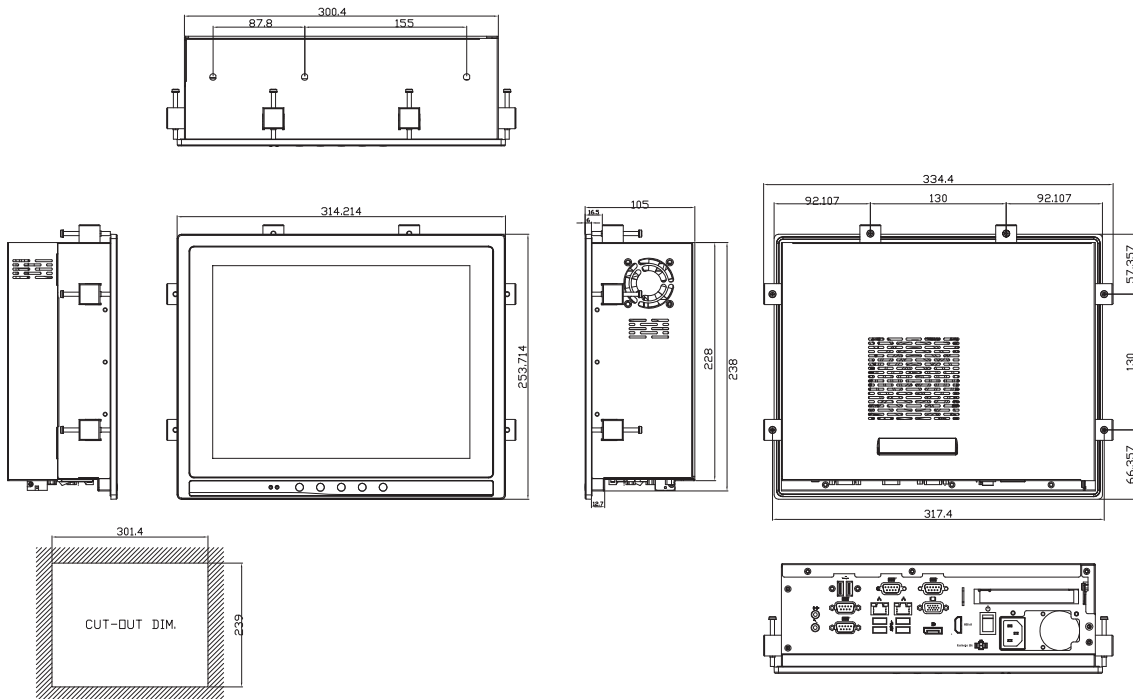
82211270210E	VESA & wall mount kit
82231870240E	Wireless LAN kit (Sparklan251N)
E981604011	ATC10 (VESA arm clamp type)
E981604012	ATW10 (VESA arm wall mount)
E983100017	VESA desktop stand (black)

Optional OS Installation

Skylake: Windows® 7/8.1/10

Kabylake: Windows® 10 64-bit

Dimensions



* All specifications and photos are subject to change without notice.