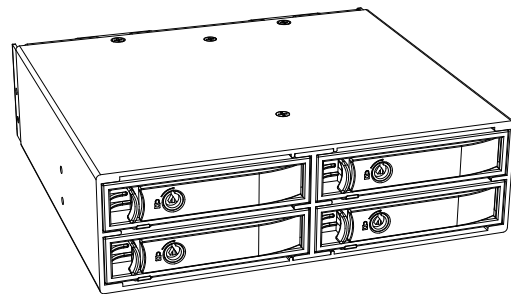


# 正反面单色印刷

76mm

## MRA267-U.2 4x2.5寸U.2 NVMe硬盘抽取盒



说明书

### 产品介绍

MRA267-U.2 2.5寸4盘位U.2 NVMe硬盘抽取盒, 占用一个5.25寸光驱位空间, 可容纳4颗硬盘; 产品内外采用金属材质, 坚固耐用; 硬盘托架带锁设计, 保护硬盘使用安全; 2颗3.5公分风扇主动散热, 并带有风扇转速调节开关; 传输介面为4个NVMe U.2 SFF-8643接口。

### 产品规格

- ◎ 传输介面: NVMe (U.2 SFF-8643)
- ◎ 支持硬盘: 7~15mm厚度2.5寸U.2 NVMe 硬盘
- ◎ 产品材质: 铝合金外壳和门、不锈钢硬盘托架、钢板后盖
- ◎ 应用系统: Windows、Mac
- ◎ 电源指示灯: 蓝灯恒亮
- ◎ 读写指示灯: 蓝灯闪烁
- ◎ 风扇故障灯: 红蓝指示灯交替闪烁
- ◎ 产品尺寸: 139(L)x146(W)x42(H)mm
- ◎ 工作温度: 0~55°C

### 包装内容

MRA267-U.2产品	1 pcs
硬盘仓钥匙	2 pcs
MiniSAS SFF-8643数据线 (选配)	4 pcs
说明书	1 pcs
机箱固定螺丝	8 pcs
硬盘固定螺丝	16 pcs

### 硬盘仓门上锁、解锁图示

用钥匙按如下图位置做90度旋转

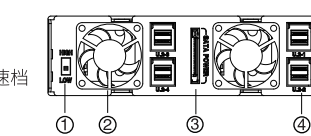
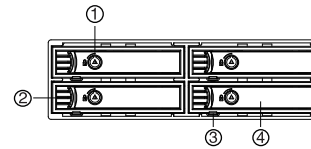
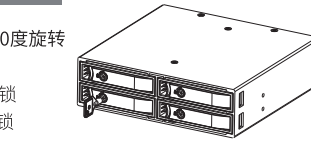


### 前面板

1. 硬盘仓门锁
2. 硬盘仓门扣
3. 硬盘指示灯
4. 硬盘仓门

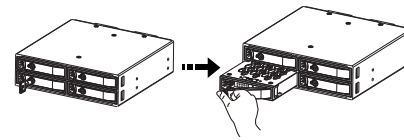
### 后面板

1. 风扇转速切换开关  
LOW: 低速档 HIGH: 高速档
2. 风扇
3. SATA 15P电源接口
4. U.2 NVMe SFF-8643



### 安装硬盘

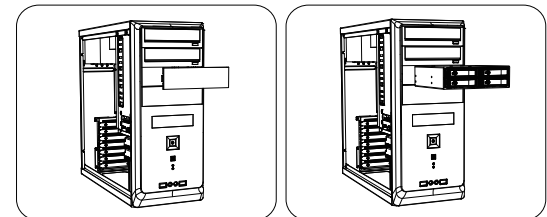
1. 确认硬盘仓门锁处于解锁状态(如处于上锁状态, 用钥匙旋转到解锁状态); 向右拨动仓门扣此时仓门弹开, 拔出硬盘托架。



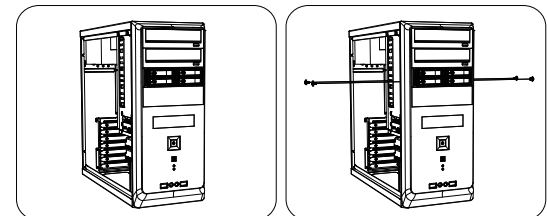
2. 将硬盘塞入托架中, 硬盘接口朝前, 底部四颗螺丝固定硬盘, 再插入槽中。



### 产品固定到机箱上

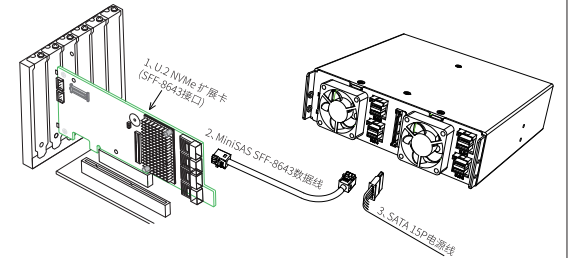


1. 取出机箱闲置光驱位面板
2. 产品按如图方向插入光驱位



3. 产品面板与机箱面板齐平
4. 产品两侧用螺丝锁到机箱上

### 产品连接示意图

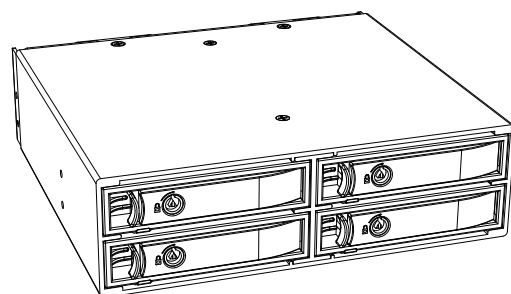


1. MiniSAS线连接产品到NVMe U.2板卡 (产品无附NVMe U.2卡)
2. 将机箱电源SATA电源线插入到产品SATA 15P口

### 注意事项

- ▲ 必须使用本产品所配机箱螺丝锁固产品到机箱上, 使用非标配螺丝有可能会影响正常使用;
- ▲ 硬盘属于精密器件, 使用过程中, 应轻拿轻放;
- ▲ 当硬盘所需电力较大时, 建议使用单独一组电源供电线为产品提供电力;
- ▲ 主板和硬盘都支持热插拔功能时, 才能在电脑启动后对硬盘进行热插拔操作; 否则, 需要在电脑启动前, 安装好硬盘, 硬盘才能被电脑正常识别到;

## MRA267-U.2 4 x 2.5" U.2 NVMe HDD Enclosure



User Manual

### Introduction

MRA267-U.2 2.5 inch 4 Bay U.2 NVMe hdd enclosure fits 4 x 2.5" U.2 NVMe SSD in a 5.25" space. The product is made of metal materials - Rugged and Stable. The tray with mechanical lock keeps HDD working securely. Built-in two 3.5x3.5 cm fan and fan switch for good heat ventilation. Host connector : 4 x U.2 NVMe SFF-8643.

### Specifications

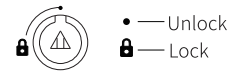
- ◎ Host connector: NVme (U.2 SFF-8643)
- ◎ Supported HDD type: 2.5" U.2 NVMe SSD
- ◎ Material: Aluminum, SPCC, SUS430 stainless steel, PC
- ◎ Operating Systems: Windows/Mac
- ◎ LED indicator: Solid blue for power and blinking blue for HDD access. Blinking red for Fan malfunction, alternating red and blue flashing.
- ◎ Product Dimensions: 139(L)x146(W)x42(H)mm
- ◎ Operating Temperature: 0 ~55°C

### Package Content

MRA267-U.2	1 pcs
Key	2 pcs
MiniSAS HD Cable (Optional)	4 pcs
User Manual	1 pcs
Frame screw	8 pcs
HDD tray screw	16 pcs

### Lock

Use the key to unlock it by rotating the key 90 degrees clockwise

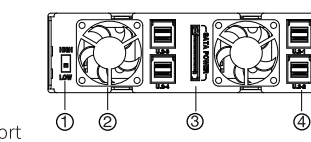
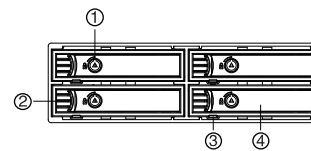
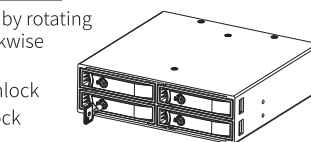


### Front view

1. Lock
2. Tray release latch
3. LED indicator
4. Tray door

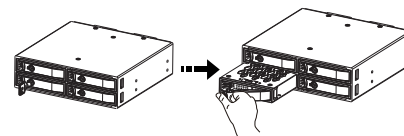
### Back view

1. Fan speed switch
2. Fan
3. SATA power port
4. U.2 NVMe SFF-8643 port



### HDD Installation

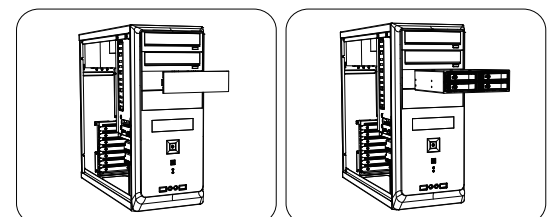
1. If the door is locked, use the key to unlock it. Squeeze the latch to release the door handle, pull the door handle open.



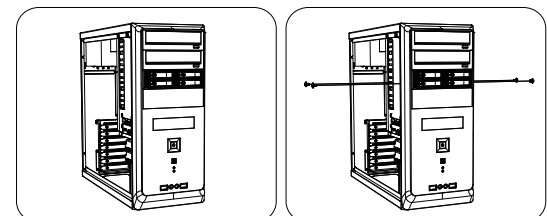
2. Slide the tray out of the enclosure, insert the HDD into the tray and fixed it by 4 screws on the bottom. Slide the tray into the enclosure and close the door. Lock the door if needed.



### Hardware Installation

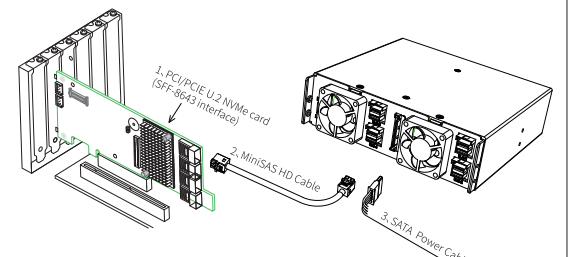


1. Remove the panel from the available 5.25" bay.
2. Insert the enclosure into the bay as shown in the figure.



3. The enclosure panel is flush with the chassis panel.
4. Fix four screws on each side, eight screws in total.

### Connect the cables



Connect the enclosure to the U.2 host port with four MiniSAS HD cables and to power with a SATA power cable. (Note: PCI/PCIE U.2 NVMe card and cables are not included; MiniSAS HD cable is optional)

### Note

- ▲ Be sure to use the included frame screws to fix the enclosure to the chassis. Failure to do so may affect normal use.
- ▲ Hard drives should be handled carefully, especially when you transport them. If you're not careful with your hard drives, you may experience lost or corrupted data.
- ▲ It requires more power to allow four NVMe hard drives working at the same time, be sure to power with the separate SATA power cable.
- ▲ Host must support hot-plug function in order to support hot-swap function for the U.2 SSD. If your motherboard does not support U.2 SSD hot swap function, be sure to install the drive first and power on the computer and the enclosure after, otherwise, the drive will not be detected by the computer.