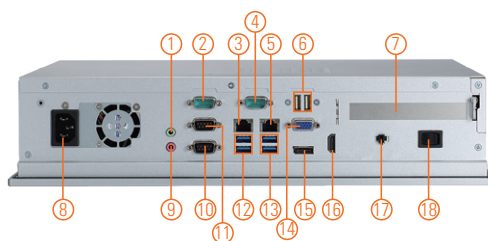
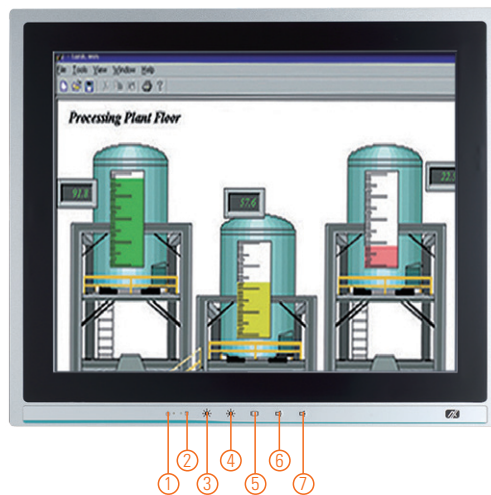


P1177E-500 NEW

17" SXGA TFT Expandable Industrial Touch Panel Computer with 7th/6th Gen Intel® Core™ i7/i5/i3, Celeron® & Pentium® Processor and 1 PCI/PCIe Slot

Features

- 17" SXGA TFT LCD display
- LGA1151 socket 7th/6th gen Intel® Core™ i7/i5/i3, Celeron® & Pentium® processors
- Intel® H110 chipset
- Less screw design for easy installation
- 4 USB 3.0, 2 USB 2.0 and 4 COM
- One PCIe x4 or one PCIe slot
- Built-in speakers and optional Wi-Fi 802.11 b/g/n module
- Robust IP65 compliant aluminum front bezel
- 5 OSD keys in front panel



Introduction

The P1177E-500 is a multimedia 17" touch panel PC for kiosk application. It has a fashionable mechanism design and industrial-grade material front bezel which can avoid damage from chemical corrosion. To meet the demands of multimedia application, the P1177E-500 is powered by a high performance LGA1151 socket 7th/6th generation Intel® Core™ processor with the Intel® H110 chipset. It features four COM ports, two Gigabit Ethernet and up to 32GB memory of dual-channel DDR4-2133 that delivers high computing capability for high performance-demanding applications. The industrial touch panel PC is most suitable for kiosk, factory and automation.

Expandable for 1 PCIe or 1 PCI

The P1177E-500 has 1 PCIe x4 or 1 PCI slot for expansion purpose. User can easily plug in standard half-size PCI or PCIe card based on any application needs.

Speaker and WLAN Antenna Supported

The P1177E-500 features built-in speakers for kiosk application to display multimedia content program. It also supports WLAN module antenna (optional) for wireless network connectivity.

Friendly Less Screw Design

The P1177E-500 is designed with easy of maintenance in mind. There are only four screws on the back chassis, so that technicians can quickly remove the system's back cover with minimum effort.

- | | | |
|-----------------------------------|---|---------------------------------|
| 1. 1 x Line-out | 7. 1 x PCI or 1 x PCIe x4 Card expansion slot | 12. 2 x USB 3.0 |
| 2. 1 x RS-232 (COM 3) | 8. 1 x AC Plug | 13. 2 x USB 2.0 |
| 3. 1 x RJ-45 for Gigabit Ethernet | 9. 1 x Mic-in | 14. 1 x VGA |
| 4. 1 x RS-232 (COM 4) | 10. 1 x RS-232 (COM 2) | 15. 1 x Display Port |
| 5. 1 x RJ-45 for Gigabit Ethernet | 11. 1 x RS-232/422/485 (COM 1) | 16. 1 x HDMI |
| 6. 2 x USB 2.0 | | 17. 1 x Remote switch button |
| | | 18. 1 x Switch for power on/off |

Specifications

Front Bezel	Aluminum w/ IP65/NEMA 4 rugged protection
LCD Panel	Display Type 17" SXGA TFT LCD
	Brightness 250 nits
	Resolution 1280 x 1024 pixels
	Viewing Angle 160°/140°
Main System	CPU LGA1151 socket 7th/6th gen Intel® Core™ i7/i5/i3, Celeron® & Pentium® processor
	Chipset Intel® H110
	System Memory 2 x 288-pin DDR4-2133 Long-DIMM, up to 32GB
	BIOS AMI UEFI BIOS
	Storage 1 x 3.5" or 1 x 2.5" 7/9.5 mm SATA HDD/2 x 2.5" 7/9.5 mm SATA HDD (optional)
	Drive N/A
	Watchdog Timer 255 levels, 1 ~ 255 sec.

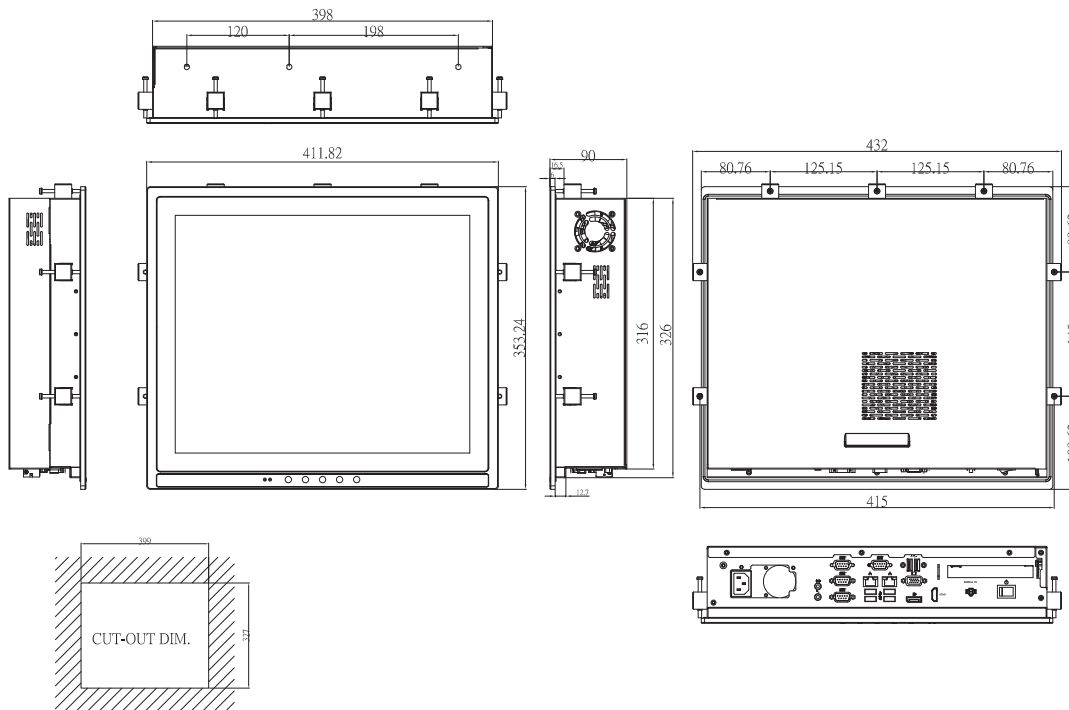
Specifications

IO Connector	3 x RS-232 (COM 2 ~ 4) 1 x RS-232/422/485 (COM 1) 1 x HDMI 1 x VGA 1 x DisplayPort 4 x USB 3.0 2 x USB 2.0 2 x 10/100/1000 Mbps Ethernet (Intel® i219-LM/i211-AT) 1 x Audio (Mic-in/Line-out) 1 x Remote Power Switch
Expansion Interface	1 x PCIe x4 or 1 x PCI
Touchscreen	5-wire resistive type Light transmission 79% 1 million activations (typical) at a single point
Power Supply	100 ~ 240 VAC, 200 W
Power Consumption	143W
Dimensions	411.82 mm (16.21") (W) x 90 mm (3.54") (D) x 353.24 mm (13.91") (H)
Packing Dimension	610 mm (24.02") (W) x 260 mm (10.24") (D) x 590 mm (23.23") (H)
Weight(net/gross)	6.4 Kg (14.11 lb) / 10.2 Kg (22.49 lb)
Environment	Operating temperature: 0°C ~ +50°C (+32°F ~ +122°F) Relative humidity: 10% ~ 90% @ +40°C, non-considering Operating vibration: 1.0G, 5 ~ 500 Hz, random
Certificate	CE

Packing list

1 x P1177E-500
1 x Driver CD
7 x Panel mount kit

Dimensions



Ordering Information

P1177E-500 w/ PCIe	17" SXGA expandable industrial touch panel computer with LGA1151 socket 7th/6th gen Intel® Core™ i7/i5/i3, Pentium® & Celeron® processor, resistive touch screen and 1 PCIe x4 slot and 100 ~ 240 VAC
P1177E-500 w/ PCI	17" SXGA expandable industrial touch panel computer with LGA1151 socket 7th/6th gen Intel® Core™ i7/i5/i3, Pentium® & Celeron® processor, resistive touch screen and 1 PCI slot and 100 ~ 240 VAC

* Specification and certifications are based on requirements and may vary.

Optional Accessories

82211570380E	P1157E-500 2.5" slim HDD kit supports 15"/17" touch panel PC
72211773300E/ 82211770360E	P1177E-500 VESA & wall mount bracket
82231870240E	Wireless LAN kit (Sparklan 251N)
E981604011	ATC10 (VESA arm clamp type)
E981604012	ATW10 (VESA arm wall mount)
E221177116	PPC HA741L black stand (L)
59403200B00E	Remote power switch cable
	Power cord (EU/US/UK/JP)
82211770380E	P1177E-500 rack mount kit

Optional OS Installation

Skylake: Windows® 7/8.1/10
Kabylake: Windows® 10 64-bit