

76mm

2.5" SATA HDD內置式硬碟抽取盒



使用說明書
MRA277

110mm



快速安裝指南

產品規格

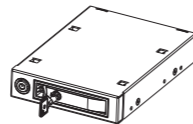
- ◎ 產品名稱:MRA277
- ◎ 作業系統:Windows Vista/XP/2000/98E/ME; Win7/Mac9.3 higher
- ◎ 傳輸介面:支援SATA I/II/III
- ◎ 適用於2.5" SATA/SAS/SSD硬碟
- ◎ 電源指示燈:電源開關鍵開啟後綠色指示燈長亮
- ◎ 硬碟指示燈:插入硬碟藍色指示燈長亮,讀寫時紅閃爍
- ◎ 支援熱插拔
- ◎ 重量:420g
- ◎ 產品尺寸:142(L)x101(W)x25(H)mm
- ◎ 工作溫度:0~55°C

包裝內容

附件	數量
MRA277	1Pcs
SATA訊號線	1Pcs
機殼固定螺絲	6Pcs
說明書	1Pcs
鑰匙	2Pcs
硬碟固定螺絲	4Pcs

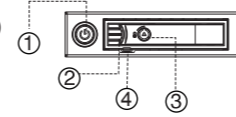
開關鍵 用鑰匙解鎖(順時針旋轉90度)

鎖



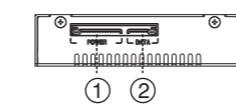
前面板

1. 電源開關鍵和電源指示燈(綠色)
2. 把手卡扣
3. 鎖
4. 硬碟電源及讀寫指示燈

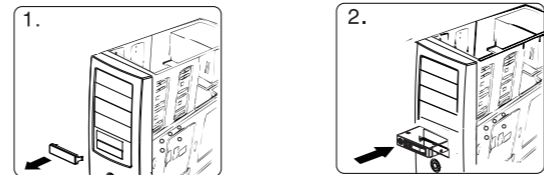


後面板

1. SATA電源連接器(15P)
2. SATA數據連接器(7P)



安裝

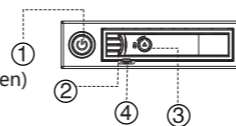


1. 卸下電腦機箱前方3.5"空槽面板(軟體驅動器空間).
2. 小心插入MRA277並推至底使之與機箱前面板平齊,MRA277孔位與機箱孔位對齊.

3. 每邊使用2個螺絲,4孔固定

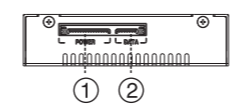
Front Panel

1. Power switch & Power LED(green)
2. Handle lockset
3. Lock
4. HDD indicator

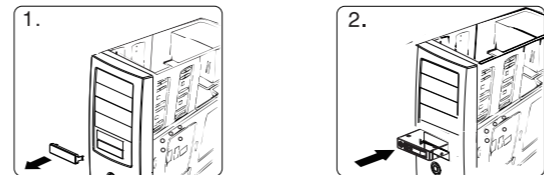


Rear panel

1. SATA power connector(15P)
2. SATA data connector(7P)

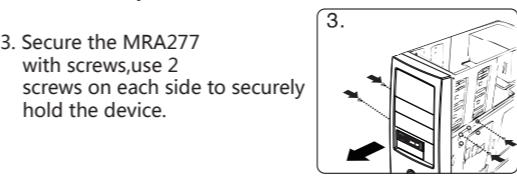


Installation



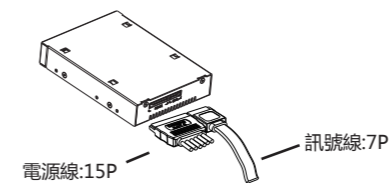
1. Remove the slot cover of an empty 3.5" floppy bay.
2. Carefully insert the MRA277 into the bay and push it inward until the MRA277 screw hole is aligned with the hole of the bay.

3. Secure the MRA277 with screws,use 2 screws on each side to securely hold the device.



連接

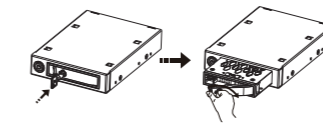
1. 請將SATA15P端連接至MRA277之15P端口,
2. 請將SATA7P訊號線一端連接MRA277另一端插入主機板訊號埠或者RAID卡上的訊號埠.如圖:



線材與電腦主機或與MRA277相接前,務必確認兩端均無雜物附著在端子上面,以免造成電性短路.

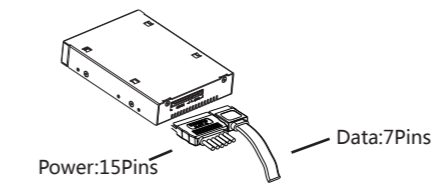
安裝硬碟基本步驟

1. 用鑰匙解鎖三角鎖(順時針旋轉90度),拉開硬碟抽取拉門,打開前門.



Connect the HDD-ROM Cable

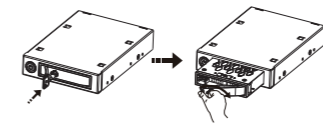
1. Connect the SATA 15P power cable to MRA277, another end ATX-4P to PC power supply.
2. Connect one end of the SATA 7P cable to MRA277 another end(7P) to mother board or the SATA RAID card.



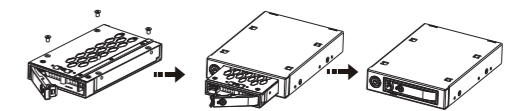
Before connecting the 15P SATA+power cable to the PC or with MRA277 HDD-ROM,please check there is no object attached or around the terminals that may effect the mechanical assembly which become a possible source of an electrical short.

Install HDD

1. Use the key "clockwise 90°" to open the front door.



2. 取出Tray,放入2.5" 硬碟鎖上螺絲,再把Tray放入外殼,關上面板.



1. 插入硬碟並關上面板時,請小心輕輕推動前面板至鎖住狀態,以免機構零件受損.
2. 如果硬碟插入方向錯誤,請不要關閉前門,如強行關閉MRA277會被損害.

卸下硬碟步驟

1. 使用鑰匙解鎖三角鎖(順時針旋轉90度),拉開硬碟抽取拉門,打開前門.
2. 將硬碟從MRA277中取出,關好MRA277前門.使用鑰匙對準,三角鎖逆時針旋轉90度鎖定.

1. 當工作狀態下禁止卸下硬碟.
2. 硬碟表面溫度有可能高達50°C,雖不會造成燙傷,但仍要小心,請接觸硬碟邊緣,不要觸摸上面的電路板.

聲明

用戶手冊所包含的內容均受到版權法的保護未經臺灣賀豪科技股份有限公司的批准,任何組織或個人不得以任何手段或形式對其進行複製,存於資料庫或檢索系統.對於在使用硬碟抽取盒過程中所造成的任何損失,賀豪科技股份有限公司概不負責.

2.5" internal enclosure



USER'S MANUAL
MRA277

110mm



Quick Installation Guide

Specifications

- ◎ Product name:MRA277
- ◎ OS:Windows Vista/XP/2000/98E/ME; Win7/Mac9.3 higher
- ◎ Interface:SATA I/II/III(6.0G/s)
- ◎ Fits all 2.5" SATA/SAS hard disk
- ◎ Supports hot swap
- ◎ Power indicator: Turn on the power then green light on
- ◎ HDD indicator:Inserting the HDD then blue light on. The red light will blinking during access
- ◎ Weight:420g
- ◎ Dimensions:142(L)x101(W)x25(H)mm
- ◎ Operation Temperature:0~55°C

Package Content

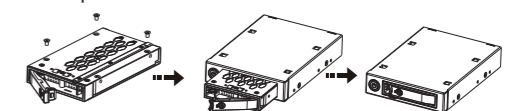
Accessories	Quantity
MRA277	1pcs
data cable	1pcs
Computer case mounting screws	6pcs
Manual	1pcs
key	2pcs
HDD mounting screws	4pcs

Switching key Use the key to unlock it by rotating the key 90 degrees clockwise

LOCK



2. Put the 2.5" HDD into the MRA277 and close the front panel.



1. After inserting HDD and closing the front door, carefully push the tray until it is seated into position, Excessive force may damage its mechanical parts.
2. If the HDD is inserted backward into the tray,forcing the device may damage the MRA277.

Eject HDD from the HDD-ROM

1. Use the key "clockwise 90°" to open the door .
2. Take the HDD out from MRA277 , and firmly close the front door.Use the key "counter-clockwise 90°" to lock the door .

1. Do not eject the HDD while it is busy.
2. Carefully take the HDD out from MRA277. The HDD can reach temperatures over 50 C. It will not burn the fingers but should be handled with care.

Statement

We provide repair service for defective product, and do not take responsibility for data loss that caused by manual operation mistake.