

MRA281

2.5" SATA/SAS防震硬碟抽取盒



使用說明書

MRA281

2.5" SATA/SAS Enclosure with Vibration Proof

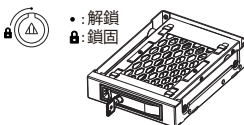


User Manual

產品說明

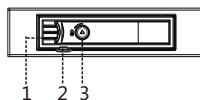
開關鍵

用鑰匙解開三角鎖(順時針旋轉90度)即可。



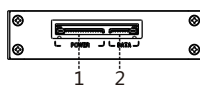
前面板

1. 把手卡扣
2. 硬碟電源及讀寫指示燈
3. 鎖



後面板

1. SATA電源連接器 (15P)
2. SATA數據連接器 (7P)



產品規格

作業系統：Windows/Mac
 傳輸介面：支援 SATA I/II/III(6.0Gb/s)適用於2.5" SATA硬碟 支持熱插拔
 LED指示燈：電源指示,插入硬碟(藍燈亮) 讀寫指示(藍燈閃爍)
 使用範圍：防震領域
 材 質：五金+塑膠
 硬碟厚度：7~15mm
 產品尺寸：135(L)x101.6(W)x25(H)mm
 工作溫度：-40~85°C
 產品重量：304g

包裝內容

- SATA7P 訊號線 (x1) 說明書 (x1)
 螺絲 (x8) 鑰匙 (x2)

Product diagram

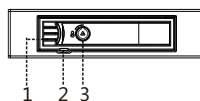
Lock

Use the key to unlock it by rotating the key 90 degrees clockwise.



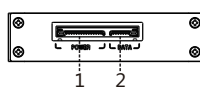
Front view

1. Tray release latch
2. LED indicator
3. Lock



Back view

1. SATA power port (15P)
2. SATA data port (7P)



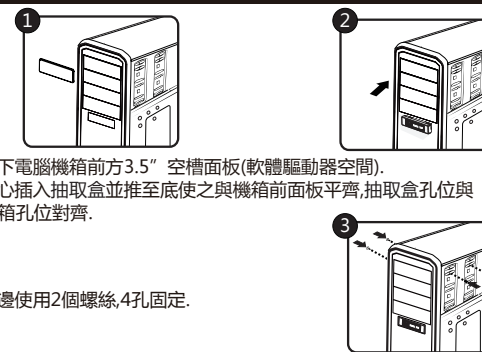
Specifications

Operating Systems : Windows/Mac
 Interface : Support SATA I/II/III(6.0Gb/s)
 Supported HDD type : 1 x 2.5" SATA / SAS HDD
 Supported HDD thickness : 7~15mm
 LED indicator : Solid blue for power and blinking blue for HDD access
 Material : Metal + plastic parts
 Product Dimensions : 135(L)x101.6(W)x25(H)mm
 Product Weight : 304g
 Operating Temperature : -40~85°C
 Application : Vibration Proof

Package content

- SATA data cable (x1) Key (x2)
 Frame screws (x4) User manual (x1)
 HDD tray screws (x4)

安裝

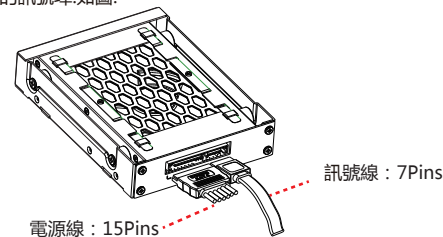


1. 卸下電腦機箱前方3.5" 空槽面板(軟體驅動器空間).
2. 小心插入抽取盒並推至底使之與機箱前面板平齊,抽取盒孔位與機箱孔位對齊.

3. 每邊使用2個螺絲,4孔固定.

連接

1. 請將SATA15P端連接至抽取盒之15P端口,
2. 請將SATA7P訊號線一端連接抽取盒,另一端插入主機板訊號埠或者RAID卡上的訊號埠.如圖:



線材與電腦主機或與抽取盒相接前,務必確認兩端均無雜物附著在端子上面,以免造成電性短路.

電源線：15Pins

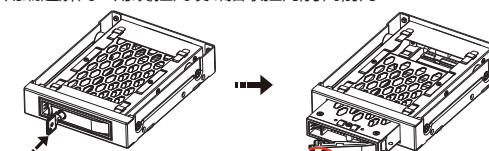
訊號線：7Pins

Power：15Pins

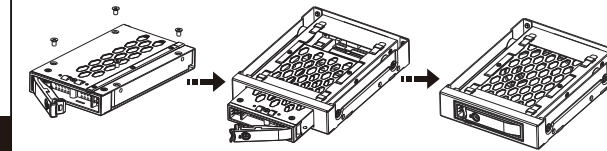
⚠ Avoid anti-static electricity when installing the HDD enclosure.

安裝硬碟基本步驟

1. 用鑰匙解開三角鎖,拉開硬碟抽取拉門,打開前門.



2. 取出Tray,放入2.5" 硬碟鎖上螺絲,再把Tray放入外殼,關上面板.



1. 插入硬碟並關上面板時,請小心輕輕推動前面板至鎖住狀態,以免機構零件受損.
2. 如果硬碟插入方向錯誤,請不要關閉前門,如強行關閉抽取盒會被損害.

卸下硬碟步驟

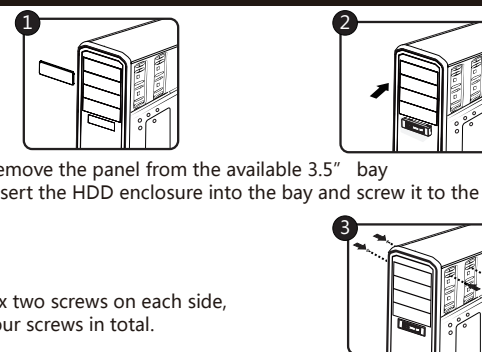
1. 使用鑰匙解鎖,拉開硬碟抽取拉門,打開前門.
2. 將硬碟從抽取盒中取出,關好抽取盒前門.使用鑰匙鎖定.

1. 當工作狀態下禁止卸下硬碟.
2. 硬碟表面溫度有可能高達50°C,雖不會造成燙傷,但仍要小心,請接觸硬碟邊緣,不要觸摸上面的電路板.

聲明

用戶手冊所包含的內容均受到版權法的保護未經本公司的批准,任何組織或個人不得以
 任何手段或形式對其進行複製,存於資料庫或檢索系統.對於在使用硬碟抽取盒過程中
 所造成的任何損失,本公司概不負責.

Hardware Installation

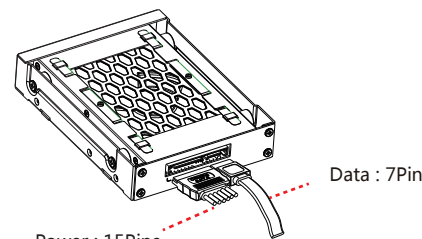


1. Remove the panel from the available 3.5" bay
2. Insert the HDD enclosure into the bay and screw it to the chassis.

3. Fix two screws on each side, four screws in total.

Connect the cables

Connect the HDD enclosure to the motherboard with a SATA data cable and to power with a SATA power cable.



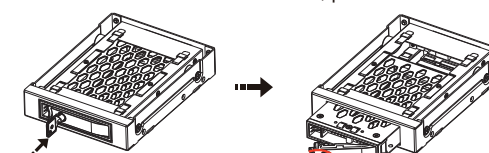
Data：7Pins

Power：15Pins

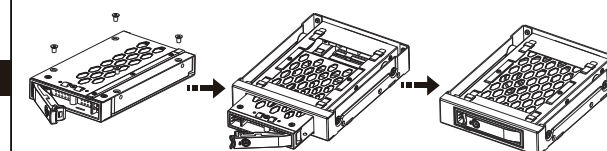
⚠ Avoid anti-static electricity when installing the HDD enclosure.

HDD Installation

1. If the HDD enclosure is locked, use the key to unlock it. Squeeze the latch to release the door handle, pull the door handle open.



2. Slide the tray out of the enclosure, insert the HDD into the tray and fixed it by 4 screws on the bottom. Slide the tray into the enclosure and close the door. Lock the HDD enclosure if needed.



Note

1. Hard drive is a precision device, please read the HDD manual in advance before use.
2. Do not force to close the door if inserting the HDD in wrong direction, or the HDD enclosure will be damaged.
3. Please do not remove the drive during working condition.
4. Be aware of the heat since the drive may reach temperature up to 50°C.
5. We provide repair service for defective product, and do not take responsibility for data loss that caused by manual operation mistake.