

size:110\*250mm

# MRA275 PRO 系列 使用說明書



## TOOL FREE SCREW-LESS [ HDD-ROM ] 2 x 2.5" 內置式硬碟抽取盒

### 產品規格&包裝內容

#### MRA275 PRO

#### 產品規格

作業系統: Windows/Mac  
傳輸介面: 支援 SATA I/II/III(6.0Gb/s)適用於2.5" SATA硬碟 支持熱插拔  
LED指示燈: 電源指示(插入硬碟(藍色燈長亮) 讀寫指示(橙色燈閃爍)  
硬碟厚度: 9.5mm  
重量: 196g  
產品尺寸: 140(L)x101.2(W)x25(H)mm  
工作溫度: 0~55°C

#### 包裝內容

螺絲 (x4)  
說明書 (x1)



#### MRA275L PRO

#### 產品規格

作業系統: Windows/Mac  
傳輸介面: 支援 SATA I/II/III(6.0Gb/s)適用於2.5" SATA硬碟支持熱插拔  
LED指示燈: 電源指示(插入硬碟(藍色燈長亮) 讀寫指示(橙色燈閃爍)  
硬碟厚度: 9.5mm  
重量: 220g  
產品尺寸: 140(L)x101.2(W)x25(H)mm  
工作溫度: 0~55°C

#### 包裝內容

螺絲 (x4)  
鑰匙(x1)  
說明書 (x1)



#### MRA275AL PRO

#### 產品規格

作業系統: Windows/Mac  
傳輸介面: 支援 SATA I/II/III(6.0Gb/s)適用於2.5" SATA硬碟支持熱插拔  
LED指示燈: 電源指示(插入硬碟(藍色燈長亮) 讀寫指示(橙色燈閃爍)  
硬碟厚度: 9.5mm  
重量: 230g  
產品尺寸: 140(L)x101.2(W)x25(H)mm  
工作溫度: 0~55°C  
<鋁面板>

#### 包裝內容

螺絲 (x4)  
鑰匙(x2)  
說明書 (x1)

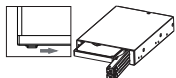


### 產品說明

#### MRA275 PRO

#### 開關鍵

輕輕推動解鎖按鈕(從左至右),使面板彈出。



#### 前面板

- 1.HDD LED燈
- 2.解鎖按鈕
- 3.HDD面板

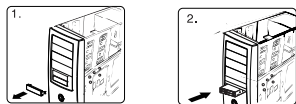


#### 後面板

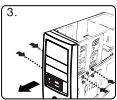
- 1.ATX-4P電源線接頭
- 2.SATA 接線口



### 安裝



- 1.卸下電腦機箱前方3.5" 空槽面板(軟體驅動器空間)
- 2.小心插入抽取盒並推至底處使之與機箱前面板平齊,抽取盒孔位與機箱孔位對齊。
- 3.每邊使用2個螺絲,4孔固定。



### 產品說明

#### MRA275L PRO

#### 開關鍵

用鑰匙解鎖三角鎖(逆時針旋轉90度)即可。



#### MRA275AL PRO

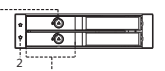
#### 開關鍵

用鑰匙解鎖三角鎖(順時針旋轉90度)即可。



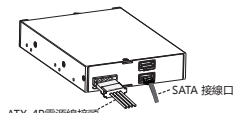
#### 前面板

- 1.硬碟抽取開關鎖
- 2.硬碟讀寫指示燈
- 3.硬碟抽取拉門



### 連接

- 1.請將機箱電源上的ATX-4P電源端子,連接至抽取盒之ATX-4P端口。
- 2.請將SATA P訊號線一端連接抽取盒,另一端插入主機板訊號埠或者RAID卡上的訊號埠,如圖。



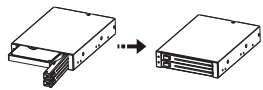
1.線材與電腦主機或與抽取盒相接觸前,務必確認兩端均無雜物附著在端子表面,以免造成電性短路。

### 安裝硬碟基本步驟

- 1.輕輕推動HDD-ROM解鎖按鈕(從左至右)使面板彈出。



- 2.放入2.5" 硬碟,再關上面板。



- 1.插入硬碟並關上面板時,請小心輕輕推動前面板至鎖住狀態,以免機構零件受損。
- 2.如果硬碟插入方向錯誤,請不要關閉前門,如進行關閉,抽取盒會被損傷。

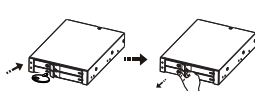
### 卸下硬碟步驟

- 1.輕輕推動抽取盒解鎖按鈕,使面板彈出。
- 2.打開前面板,取出2.5" 硬碟,再確實緊關上面板。

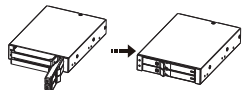
- 1.當工作狀態下禁止卸下硬碟。
- 2.硬碟表面溫度有可能高達50°C,絕不會造成燙傷,但仍要小心,請接觸硬碟邊緣,不要觸摸上面的電路板。

### 安裝硬碟基本步驟

- 1.用鑰匙解鎖三角鎖,拉開硬碟抽取拉門,打開前門。



- 2.放入2.5" 硬碟,再關上面板。



- 1.插入硬碟並關上面板時,請小心輕輕推動前面板至鎖住狀態,以免機構零件受損。
- 2.如果硬碟插入方向錯誤,請不要關閉前門,如進行關閉,抽取盒會被損傷。

### 聲明

用戶手冊所包含的內容均受到版權法的保護未經本公司的批准,任何組織或個人不得以任何手段或形式對其進行複製,存於資料庫或檢索系統,對於在使用硬碟抽取盒過程中所造成的任何損失,本公司概不負責。

size:110\*250mm

# MRA275 PRO Series User Manual



## TOOL FREE SCREW-LESS [ HDD-ROM ] 2 x 2.5" internal HDD enclosure

### Specifications & Package content

#### MRA275 PRO

#### Specifications

Interface : SATA / SAS up to 6Gbps  
Supported HDD type : 2 x 2.5" SATA / SAS HDD  
Supported HDD thickness : 9.5mm  
Product Weight : 196g  
Product Dimensions : 140(L)x101.2(W)x25(H)mm  
Operating Temperature : 0~55°C  
Operating Systems : Windows/Mac  
LED indicator : Solid blue LED for power and blinking orange LED for HDD access

#### Package content

Screw (x4)  
User manual (x1)



#### MRA275L PRO

#### Specifications

Interface : SATA / SAS up to 6Gbps  
Supported HDD type : 2 x 2.5" SATA / SAS HDD  
Supported HDD thickness : 9.5mm  
Product Weight : 220g  
Product Dimensions : 140(L)x101.2(W)x25(H)mm  
Operating Temperature : 0~55°C  
Operating Systems : Windows/Mac  
LED indicator : Solid blue LED for power and blinking orange LED for HDD access

#### Package content

Screw (x4)  
Key (x1)  
User manual (x1)



#### MRA275AL PRO

#### Specifications

Interface : SATA / SAS up to 6Gbps  
Supported HDD type : 2 x 2.5" SATA / SAS HDD  
Supported HDD thickness : 9.5mm  
Product Weight : 230g  
Product Dimensions : 140(L)x101.6(W)x25(H)mm  
Operating Temperature : 0~55°C  
Operating Systems : Windows/Mac  
LED indicator : Solid blue LED for power and blinking orange LED for HDD access  
<Aluminum panel>

#### Package content

Screw (x4)  
Key (x2)  
User manual (x1)

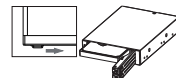


### Product diagram

#### MRA275 PRO

#### Switching button

Switch the button to the right side to open the panel.



#### Front view

- 1. LED indicator
- 2. Switching button
- 3. Front panel

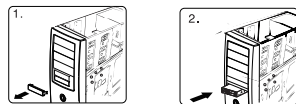


#### Back view

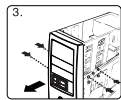
- 1. 4P Molex power connector (4P)
- 2. SATA data port (7P)



### Hardware Installation

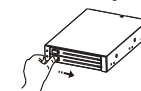


- 1. Remove the panel from the available 3.5" bay
- 2. Insert the HDD enclosure into the bay and screw it to the chassis.
- 3. Fix two screws on each side, four screws in total.

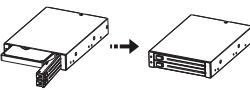


### HDD Installation

- 1. Switch the button to the right side to open the panel.



- 2. Insert the HDD, close the front panel.



- 1. Hard drive is a precision device, please read the HDD manual in advance before use.
- 2. Do not force to close the front panel if inserting the HDD in wrong direction, or the HDD enclosure will be damaged.

### Ejecting the HDD

- 1. Switch the button to the right side to open the panel.
- 2. Remove the HDD, close the front panel.

- 1. Please do not remove the drive during working condition.
- 2. Be aware of the heat since the drive may reach temperature up to 50 ° C.

### Product diagram

#### MRA275L PRO

#### Lock

Use the key to unlock it by rotating the key 90 degrees counterclockwise.



#### MRA275AL PRO

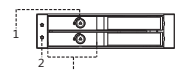
#### Lock

Use the key to unlock it by rotating the key 90 degrees clockwise.



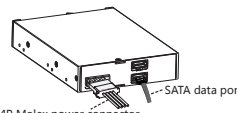
#### Front view

- 1. Lock
- 2. LED indicator
- 3. Door handle



### Connect the cables

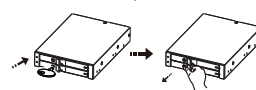
Connect the HDD enclosure to the motherboard with the SATA data cables and to power with a 4P Molex power cable.



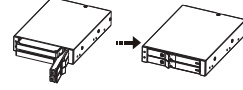
1. Avoid anti-static electricity when installing the HDD enclosure.

### HDD Installation

- 1. If the HDD enclosure is locked, use the key to unlock it. Then pull the door handle and open it.



- 2. Insert the HDD, close the front panel. Lock the HDD enclosure if needed.



- 1. Hard drive is a precision device, please read the HDD manual in advance before use.
- 2. Do not force to close the front panel if inserting the HDD in wrong direction, or the HDD enclosure will be damaged.

### Ejecting the HDD

- 1. If the HDD enclosure is locked, use the key to unlock it. Then pull the door handle and open it.
- 2. Remove the HDD, close the front panel. Lock the HDD enclosure if needed.

### Statement

We provide repair service for defective product, and do not take responsibility for data loss that caused by manual operation mistake.