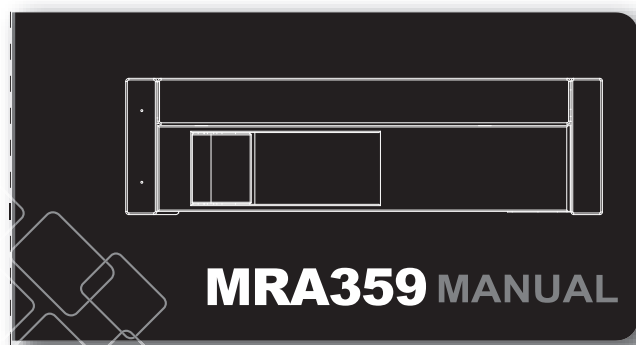


# 正反印刷, 折疊

105mm

## HDD-ROM TOOL FREE SCREW-LESS TRAY-LESS

An incredible 3-in-1 small multimedia storage solution



148mm



- Compatible for 3.5" HDD and 12.7mm slim optical drive.
- Hot swappable
- anti-shock and tool less design
- NSS connector to give over 50,000 cycle hot swaps.

## MRA359 Manual

### MRA359



#### Features:

- Accommodates both 3.5" SATA hard drive and 12.7mm slim optical drive
- Supports hot swaps
- Unique anti-shock design patented screw-less mechanism
- Nss connector gives over 50,000 cycle hot swaps

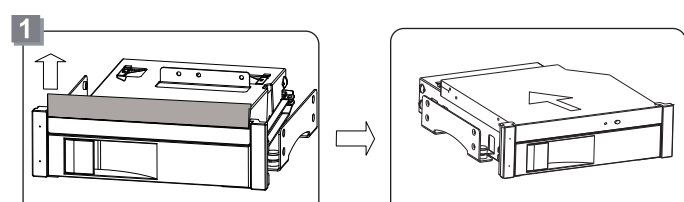
#### Specifications:

- Fit all 3.5" Serial ATA hard drives
- Supports hot swap
- Supports SATA II (3.0Gb/s)
- Housing Assembly: 184mm(L)x148mm(W)x42mm(H)
- Interface: SATA or PATA for slim optical drive. SATA for hard drive
- Weight: 310g
- Operating Temperature: 0~55°C

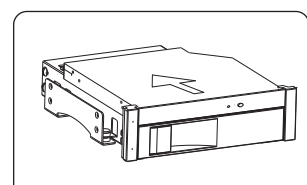
#### Package Content:

MRA359	1Pcs
SATA data cable	1Pcs
Fan power & access SATA cable	1Pcs
User manual	1Pcs
Screws 3x6pwn	4Pcs
Screws 2x3pm	3Pcs

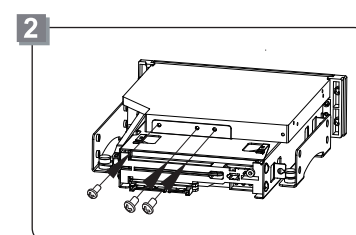
### Installation :



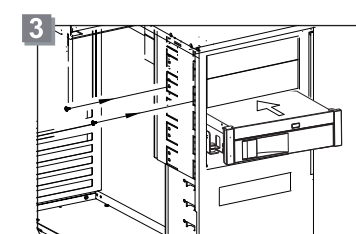
Remove the slim optical drive bay by pressing buttons of both sides.



Push 12.7mm slim optical drive into the slim drive bay.



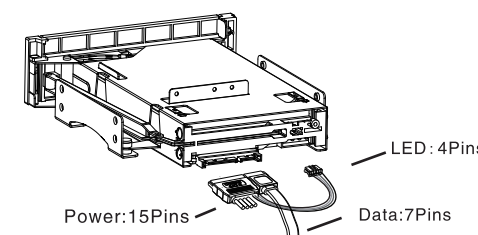
After pushing the slim optical drive into position to align with the front panel, use a magnetic screwdriver to secure three screws to the optical drive.



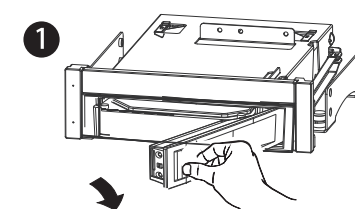
Place MRA359 into an available 5.25" bay in the chassis and secure with screws.

### Connection :

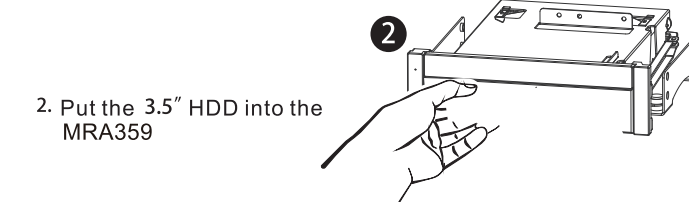
1. Insert the SATA 15P CONN. into the MRA359's 15P conn. connect the big power 4P connector to the PC's 4P power plug, and the small 4P LED wire connector to the 4P LED port at the back of MRA359.
2. Insert one end of the SATA 7P cable to MRA359, another end(7P) to either the motherboard or the SATA RAID card. the corresponding port on the motherboard



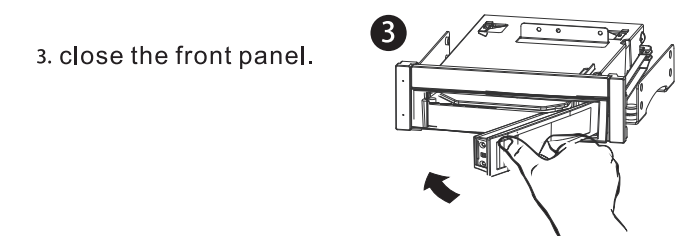
### Inserting the Hard Drive:



1. Release the door puller to eject the front door panel



2. Put the 3.5" HDD into the MRA359



3. close the front panel.

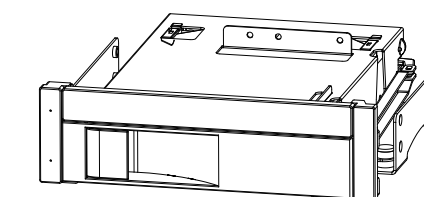
- ⚠ 1. After inserting HDD and closing the front door, carefully push the tray until it is seated into position. Excessive force may damage its mechanical parts.
- 2. If the HDD is inserted backward into the tray, forcing the device may damage the MRA359 HDD-ROM.

### Removing the Hard Drive:

1. Smoothly pull the spring lock to open the front door. Make sure the lock is at a removable position to open, or it would get damaged.
2. Carefully take the HDD out of the product.

⚠ The temperature of HDD may reach over 50°C. It's not hot enough to burn hand, but be careful.

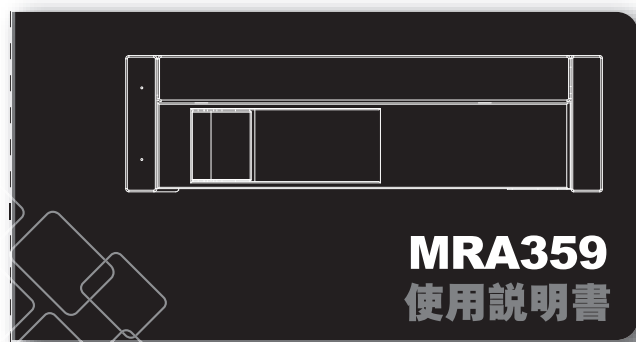
- ⚠ 1. Hard drive is a precise and accurate device. Read the manual in advance and treat it carefully.
- 2. Do not eject the HDD while it is working.
- 3. Hold the HDD by its edge instead of touching the PCB on it.
- 4. Wingsonic will provide maintenance for the product malfunction, but not be responsible for any software or data loss accident.



105mm

## 硬碟抽取盒

一个神奇的3合一小型多媒体储存装置



148mm



- 可同时搭配3.5" 硬碟+12.7mm薄型光驱
- 支援3.5" SATA硬碟热插拔
- 防震结构设计, 专利免丝结构,
- NSS专利连接器, 支援50,000次热插拔

## MRA359 使用說明書

### MRA359



#### 产品特点:

- 可同时搭配3.5" 硬碟+12.7mm薄型光驱
- 支援3.5" SATA硬碟热插拔
- 防震结构设计, 专利免丝结构,
- NSS专利连接器, 支援50,000次热插拔

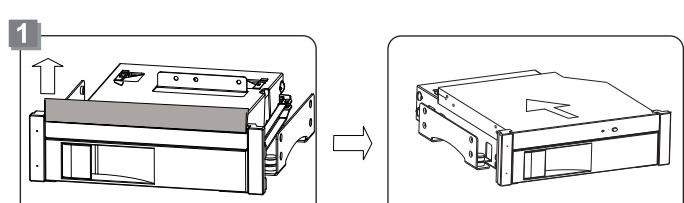
#### 产品规格:

- 适用于所有3.5" SATA硬碟
- 支援热插拔
- 支援 SATA II (3.0Gb/s)
- 产品规格: 184mm(L)x148mm(W)x42mm(H)
- 工作界面: SATA
- 重量: 310克
- 工作温度: 0~55°C

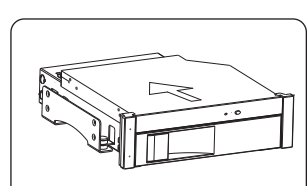
#### 包装内容:

MRA359 硬碟盒	1Pcs
SATA电源线	1Pcs
SATA连接線	1Pcs
使用说明书	1Pcs
螺丝 3x6 Pwn	4Pcs
螺丝 2x3 Pm	3Pcs

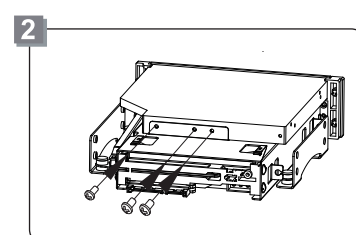
### 安装步骤:



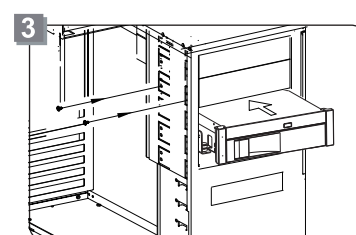
按两边按钮, 取出上档板



将12.7mm薄型光碟机推入光碟架中;



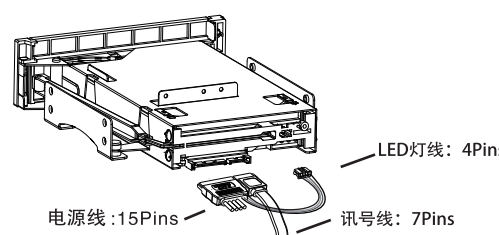
请确认薄型光碟机对准并密合于前面板, 并以螺丝起子将三颗光碟机架用螺丝锁固定;



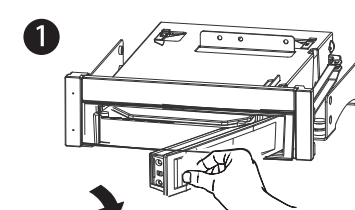
安装MRA359于机壳上的5.25" bay并以螺丝锁固于机壳;

### 连接:

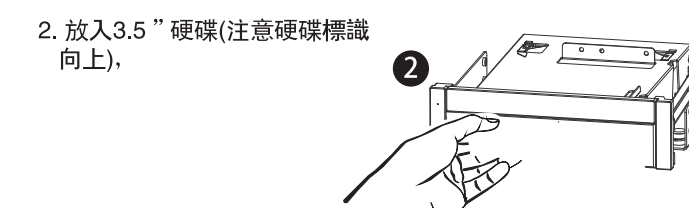
1. 请将SATA 15P 端连接至MRA359之15P端口, 大4P电源 端电脑主机电源相接, 小4P LED 端接至MRA359后端之4P LED端。
2. 请将SATA 7P讯号 端连接MRA359,另一端插入主机板讯号埠。如图示:



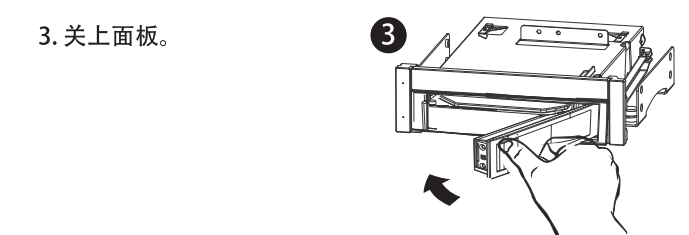
### 放置硬碟步骤:



1. 轻轻推动HDD-ROM解锁按钮(从左至右), 使面板弹出;



2. 放入3.5" 硬碟(注意硬碟標識向上),



3. 关上面板.

- ⚠ 1. 插入硬碟並關上前面板時,請小心輕輕推動前面板至鎖住狀態,以免機構零件受損.
- 2. 如果硬碟插入方向錯誤,請不要關閉前門,如強行關閉,MRA359 HDD-ROM會被損害.

### 卸下硬碟步驟

1. 輕輕拉動HDD-ROM解鎖按鈕,使面板彈出.
2. 打開前面板, 取出3.5"硬碟,再確實緊關上面板.

⚠ 1. 當工作狀態下禁止卸下硬碟.  
2. 硬碟表面溫度有可能高達50°C, 雖不會造成燙傷,但仍要小心,請接觸硬碟邊緣,不要觸摸上面的電路板.

⚠ 1. 硬碟是精密設備, 要特別注意, 請預先閱讀使用者說明書  
2. 當工作狀態禁止卸下硬碟  
3. 請接觸硬碟的邊緣, 不要觸摸上面的電路板  
4. 對於產品故障問題, 本司提供維修服務, 不承擔任何產品的軟體或資料遺失等責任.

