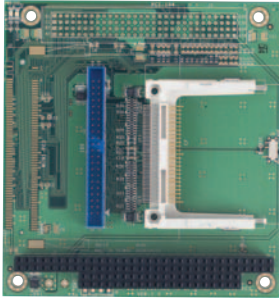


PC104-1911-CF

PC/104 IDE to Compact Flash module



Specifications

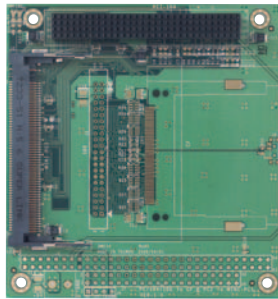
Features	ATA to standard IDE interface
Bus	PC/104 standard compliant
Connectors	2.0mm 44-pin box header for IDE x1 2.54mm 4-pin header for +12V, -12V, -5V x1 Type I/II Compact Flash slot x1
Weight	80g
Board Size	90 x 96mm (3.54 x 3.77 inches)
Operation Temperature	-20°C ~ +70°C -40°C ~ +85°C (Optional)

Packing List

- PC104-1911-CF x1
- Screw Kit x1

PC104-1911-MINIPCI

PCI-104 MINIPCI Module



Specifications

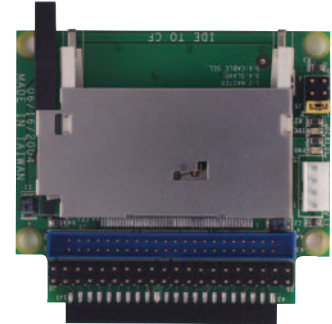
Features	PCI-104 bus to Mini PCI bus
Bus	PCI-104 standard compliant
Connectors	0.8mm 124-pin Mini-PCI card connector x1
Weight	55g
Board Size	90 x 96mm (3.54 x 3.77 inches)
Operation Temperature	-20°C ~ +70°C -40°C ~ +85°C (Optional)

Packing List

- PC104-1911-MINIPCI x1
- Screw Kit x1

CF-1915

IDE to Compact Flash Module



Specifications

Converts IDE to Compact Flash

Status Indicators	Power LED IDE Active LED
Connectors	2.0mm 44-pin box header x1 2.0mm 44-pin socket x1 2.54mm 40-pin header x1 2.54mm 4-pin Molex connector for power input x1 Type I/II Compact Flash slot x1
Weight	28g
Board Size	66 x 68mm (2.6 x 2.68 inches)

Packing List

- CF-1915 x1
- Cable
HDD 44P(2.Q) x1

1

µProcessor Module

2

Tiny Module

3

PC/104 CPU module

4

Hall-Size CPU module

5

3.5" CPU module

6

Peripheral Module

7

Display Product Series

8

Accessories & Technical Information